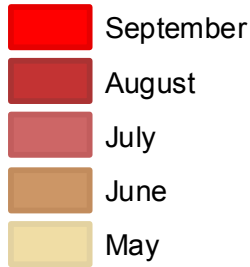


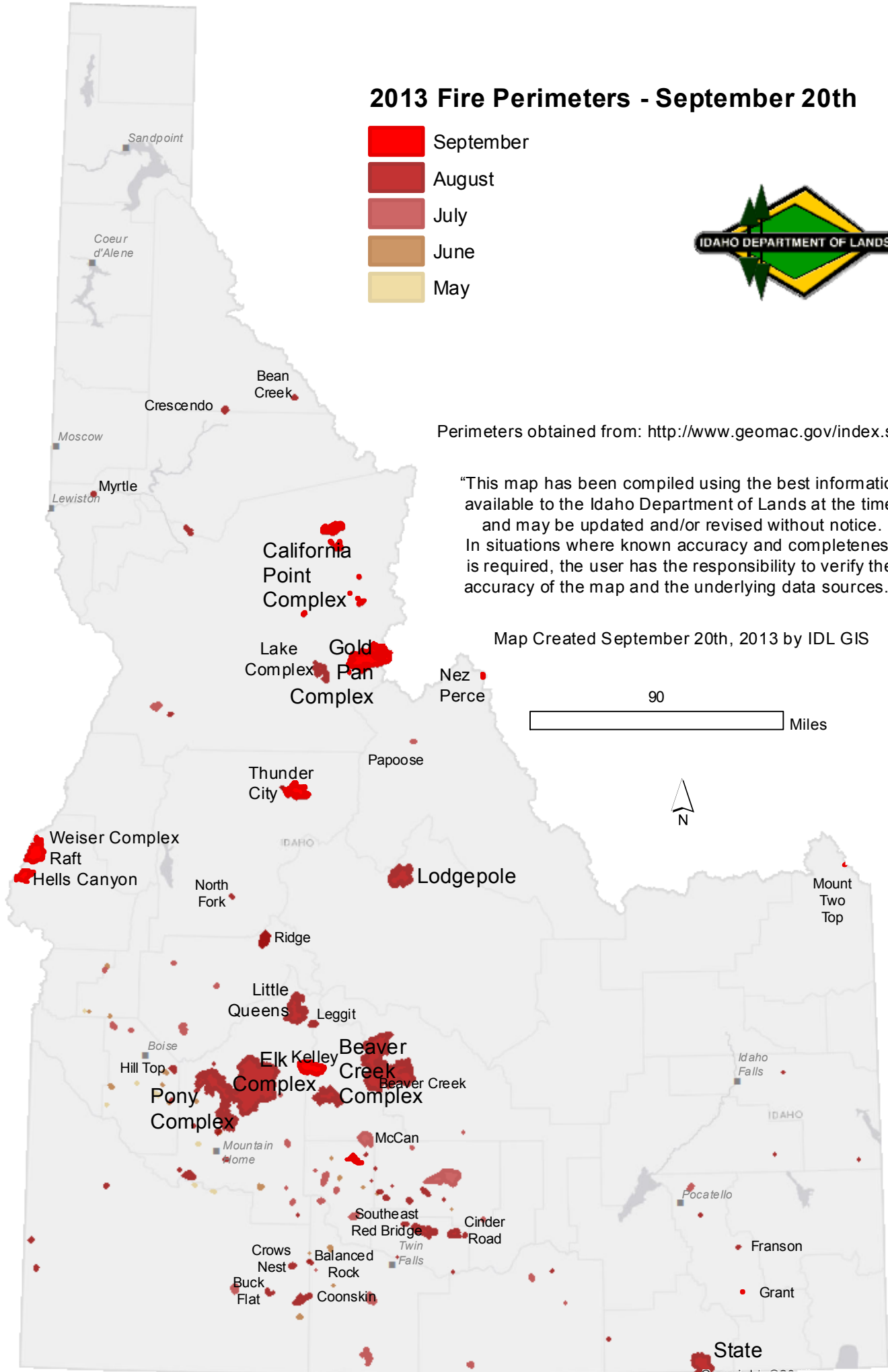
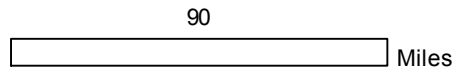
2013 Fire Perimeters - September 20th



Perimeters obtained from: <http://www.geomac.gov/index.shtml>

“This map has been compiled using the best information available to the Idaho Department of Lands at the time and may be updated and/or revised without notice. In situations where known accuracy and completeness is required, the user has the responsibility to verify the accuracy of the map and the underlying data sources.”

Map Created September 20th, 2013 by IDL GIS





Wildfires Statewide

Updated 9-23-2013 (1700 hrs)

Total acres burned to date, 2013
By ownership

Ownership	Sum of Acres
BLM	184,176
BOR	6,232
COE	30
HSTRCWTR	862
IR	19
MIL	213
OTHER	39
PRIVATE	97,726
STATE	46,314
STATEFG	305
STATEPR	0
USFS	402,112
Total	738,028

Last week's total was 734,365 acres.