

Fall 2005



Welcome to EarthTracks, the environmental education newsletter for Idaho teachers. Here you'll find news from Idaho's environmental education leaders and others interested in environmental education. We encourage your suggestions and thoughts.



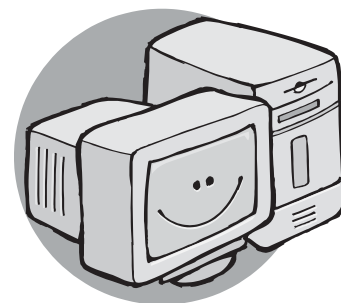
Idaho—From the Inside Out

Taking students on field trips is becoming a thing of the past for many schools. This challenges teachers interested in exposing their students to the great outdoors. While it's not a substitute for actually being there, the Internet provides many great resources to support environmental education. One useful resource is the "INSIDE Idaho" website hosted by the University of Idaho. This online clearinghouse for computerized geographic information for the state is located at <http://inside.uidaho.edu>. The Atlas link provides maps with various topics for students to download in pdf or gif formats. Topics include education levels, land cover/use, crime, population, and natural resources.

This issue of *EarthTracks* provides many examples of online resources for you. Download a version with active hotlinks at www.idahoforests.org/news.htm. Whether students learn about the environment from statistics, virtual tours, or online experiments, it is important that an appreciation of the importance of the outdoor world be included in the classroom.

Inside This Issue Of *EarthTracks*:

- Fall Workshop Schedule
- Greater Yellowstone EIC Network
- New Materials and Opportunities
- Abundant Online Resources



Do you know someone who needs *EarthTracks*?

Anyone is welcome to subscribe. Send us your mailing address (or email address if you prefer an electronic copy). Contact any of the *EarthTracks* partners for more information.



Help us keep the EarthTracks list up to date. Please let us know of address changes, or if you're receiving duplicate copies.



Workshop Calendar

Sep 30-Oct 1

WILD, Idaho Falls

Oct 6-7

Palouse Basin Water Summit WET

Oct 14-15

WILD, Boise

Oct 14-15

**PLT Walk in the Forest
Boise/Idaho City**

Oct 21-22

PLT, Boise

Nov 11-12

PLT, Moscow

Nov 18-19

WET, Boise

Jan 27-28

WET, Pocatello

More workshops may have been scheduled since this printing.

Save the date!

March 3-4, 2006

Idaho EE Summit

BSU Student Union, Boise

Theme: Esto Perpetua

How do we learn to sustain Idaho?

Go to www.idahoee.org/Summit06.html for more information or email info@idahoee.org.

FOR MORE INFORMATION:

WILD: 208-287-2889
ladams@idfg.state.id.us
WET: 208-332-4414
jscanlin@uidaho.edu
PLT: 208-334-4061
plt@idahoforests.org

Katrina

Hurricane Katrina's devastation in the Gulf Coast region sent a shockwave throughout the nation. This huge disaster will require our compassion and attention not just for weeks, but years. Here are a few websites for you and your students:

Hurricane help for schools: www.ed.gov/news/hurricane/index.html

"Birds-eye" photos of the Gulf Coast after Katrina made landfall: <http://ngs.woc.noaa.gov/katrina>

How kids can help victims of Katrina: www.dosomething.org

Four Idaho Schools Needed for Greater Yellowstone EIC Network

Thanks to a two-year \$160,000 grant from the Turner Foundation Inc., a new network of 12 schools from throughout the Greater Yellowstone Ecosystem will have access to The EIC Model™—using local Environments as Integrating Contexts for learning. EIC works to improve students' academic achievement while increasing links to their communities. Four schools each from Idaho, Montana, and Wyoming are being recruited.

"EIC creates connections with our environment as a means of meeting and exceeding educational standards," says Donny Roush, executive director of the Idaho Environmental Education Association. "We're thankful to the Turner Foundation for allowing us to share this environment-based model of school reform with teachers and students across Greater Yellowstone."

Teams from the selected schools will attend the Greater Yellowstone EIC Institute, June 12-16, 2006, at Grand Targhee Resort. They will receive assistance in developing curricula with a focus on community-based investigations, evaluation, aligning with state standards, and connecting with educational resources.

An EIC team consists of three teachers, an administrator, and a community resource person representing the same school building.

The project is coordinated by the Idaho Environmental Education Association, in partnership with the State Education and Environment Roundtable, Montana Environmental Education Association, and Wyoming Association for Environmental Education.

Interested teachers should contact Donny Roush at Idaho Environmental Education Association. For on-line information go to www.seer.org or www.idahoee.org/modelEE.html.



It's back with a new look! Subscribe to *Wildlife Express!* This newspaper features a different Idaho species each month with articles highlighting natural history and management. The newspaper is geared for 4th–6th grade, but many teachers in other grades use it too. We all know kids love animals! Use it for reading comprehension and/or science. In addition to the newspaper, you will receive Educator's Express, a teacher's guide with science, math, language arts and social studies activities. You will also receive the award-winning *Habitat and Niche: Places to Go, Things to Do*, a video produced by Idaho Dept. of Fish and Game. Hurry to subscribe. You won't want to miss out on this great offer!

To subscribe to *Wildlife Express*, contact Kevin Frailey, Conservation Education Supervisor, Idaho Dept. of Fish and Game (208) 287-2874, or download the subscription form at www.fishandgame.idaho.gov. Cost for a classroom subscription is \$30 per year. This includes a monthly set of 30 newspapers for your classroom and the Educator's Express. Check with a local business—they may want to sponsor your classroom. You'll get the subscription, and they'll get an awesome colorful certificate to post. *Wildlife Express* is also available to download at Idaho Fish and Game's website.

Energy: Fuel for Thought Free Reprint Available

With energy in the news, the *Science and Children* reprint "Energy: Fuel for Thought" comes at a good time. Learn about hydropower, wind energy, biomass and the role of public lands in our current energy picture. Includes a colorful classroom poster with activities on the back. For upper elementary and middle school students. Contact the BLM office for your free copy.



Dialogue for Kids!

Dialogue for Kids is a monthly television call-in program on Idaho Public TV. K-6th grade students can call, fax or email questions for scientists to answer live on the air, the third Tuesday of each month. An added bonus, the Dialogue for Kids website has information on each topic, and you can watch past shows on your computer. www.idahoptv.org/dialogue4kids.

Facilitators Needed

Project WET needs teachers and resource professionals to be program facilitators at the regional level. If you are interested please send your resume' and letter of interest to Julie Scanlin at Project WET.

Happy Birthday, Forest Service!

The U.S. Forest Service celebrated its 100th anniversary this year. One of the birthday gifts (from them to all of us) is "The Greatest Good," a high definition documentary of the agency's first century—a uniquely American story. The two-hour presentation is in four sections. **Contact the PLT office to borrow the video or DVD of this film.** For more information on the centennial, visit www.fs.fed.us/centennial.

Rangelands- Idaho's Roots FREE!

This Idaho history booklet is offered to all 4th grade classrooms at no cost. The kit includes 30 copies of the booklets, a teacher guide with activities and worksheets, and a resource list. Please contact the Idaho Rangeland Resource Commission.

New State Tree Bookmark

Idaho's state tree, the western white pine, is featured on a new English and Spanish bookmark. Contact PLT for your free classroom set.

Conflict in the Clearwater video

Issues abound in Idaho's Clearwater National Forest. Idaho Public TV's *Outdoor Idaho* talks to many of the players, and portrays a forest in transition. Contact PLT to borrow the video.

IDAHO ONLINE RESOURCES

How Do You Know It's a "Good" Website?

Help your students become savvy information consumers.

Evaluating the Content of Websites (from EETAP) <http://eelink.net/eetap/evalwebsites.pdf>.

The ABC's of Website Evaluation <http://kathyschrock.net/abceval/>

Quality Information Checklist <http://www.quick.org.uk/menu.htm>

Our Idaho Neighborhood

Standard Correlations Website New and Improved!

Project's WILD, WET & Learning Tree provide an interactive online website correlating each of our activities to Idaho Achievement Standards in math, language arts, social studies and science. The site now allows searching by standard number, and Power Standards are highlighted. Check it out at www.sde.state.id.us/csa. You can also link to it from any of our Idaho "Project" websites.

Teach & Tour Idaho Rangelands!

The Idaho Rangeland Resource Commission has a new online interactive tour of Idaho's rangelands. Students get a visual and intellectual tour of our beautiful and diverse state. Over the next few months, many additional resources will be added to the IRRC website under the teacher resources tab. Visit www.idahorange.org to learn more about the wild open spaces otherwise known as rangeland.

Idaho On-Line Clearinghouse of EE Resources

www.idahoe.org/cgi-bin/risee/ideea

Idaho environmental education materials, programs, sites, events, and personnel. One-stop "shopping"!

EE resource providers are invited to include information on their programs at the site. Brought to you by the Idaho Environmental Education Association.

One WILD Diary

Take a look in the life of a WILD teacher. Read her on-line diary at http://fishandgame.idaho.gov/cms/education/project_wild/.

Idaho EE Listserv

Join the Idaho Environmental Education Listserv and stay "in the loop" with happenings in EE. Share information. Ask questions. Join others who are committed to making a difference.

How to subscribe:

- 1) Send a blank email to listserv-subscribe@idahoe.org.
- 2) You'll receive a confirmation message.
- 3) Send a blank reply to confirm.

That's it! If you've got questions, contact info@idahoe.org.

Browse past listserv items at <http://idahoe.org/listarchive/>.

Additional Idaho Websites

PLT/Idaho www.idahoforests.org/plt1.htm

Project WILD/Idaho http://fishandgame.idaho.gov/cms/education/project_wild/

Data from automated SNOw TELelemetry stations www.wcc.nrcs.usda.gov/snotel/

Digital Atlas of Idaho <http://imnh.isu.edu/digitalatlas/>

Virtual Tour of Idaho www.mountainvisions.com/QTVR/IdaQTVR/IdahQTVR.html



ONLINE RESOURCES

Our Global Neighborhood

Earth & Sky (& PLT!)

The successful short format science radio program, Earth & Sky, and Project Learning Tree have teamed up on EarthCare: www.earthsky.org/shows/earthcare/. You can listen to individual Earth & Sky radio programs (90 seconds each), find out which PLT activities correlate to the topic, and access other related resources. Great audio supplements to many classroom topics!

America's Rainforests: A Distance Learning Adventure

Oct. 14, 2005. For grades 5-8. FREE! Register at <http://rainforests.pwnet.org>

More Websites to Explore

<i>National Project Learning Tree</i>	www.plt.org
<i>National Project WILD</i>	www.projectwild.org
<i>National Project WET</i>	www.projectwet.org
<i>North American Association for Environmental Education</i>	http://naaee.org
<i>EE-Link: Environmental Education on the Internet</i>	www.eelink.net
<i>Environmental Education & Training Partnership</i>	www.eetap.org
<i>Environmental Literacy Council</i>	www.enviroliteracy.org
<i>EE programs and web resources</i>	www.ClassroomEarth.org
<i>Bureau of Land Management Learning Landscapes</i>	www.blm.gov/education
<i>Environmental Protection Agency, EE pages</i>	www.epa.gov/enviroed
<i>The JASON Project</i>	www.jason.org
<i>U.S.G.S. A Satellite View of the Journey of Lewis & Clark</i>	http://edc.usgs.gov/LewisandClark

Especially for Kids

<i>Forests are for Kids</i>	www.idahoforests.org/kids1.htm
<i>BLM's soil page for kids</i>	www.blm.gov/nstc/soil/Kids/index.html
<i>EEK! Environmental Education for Kids</i>	www.dnr.state.wi.us/org/caer/ce/EEK
<i>Nat'l Geographic Kids site</i>	www.nationalgeographic.com/kids
<i>Forest Service's "Just for Kids"</i>	www.fs.fed.us/kids
<i>Wildlife Express</i>	http://fishandgame.idaho.gov/cms/news/newsletters/wild%5Fexpress

Great for High School

<i>Natural Resource Conservation Service plants database</i>	http://plants.usda.gov/index.html
<i>National Interagency Fire Center</i>	www.nifc.gov
<i>Fire Effects Information Service (effects of fire on plants and animals)</i>	www.fs.fed.us/database/feis
<i>Forest Inventory and Analysis National Program (the nation's forest "census")</i>	www.fia.fs.fed.us
<i>Pacific NW Conservation Assessment</i>	www.consbio.org/cbi/pacnw_assess/data_body.htm
<i>The Guide to Geographic Information Systems</i>	www.gis.com
<i>Clearinghouse for Idaho GIS data</i>	http://gis.idl.state.id.us

But wait! There's more!!

This just scratches the surface of online resources for EE. *EarthTracks* partner websites include several more links, and those sites contain links, and so on and so on. If you've got a great EE online resource to share, we'd love to hear from you. Our contact information is on the back panel.

TEACHING IDEAS & RESOURCES

Weed Watch



Do you have an attractive purple plant blooming in your yard, or beside a ditch or pond? It may be a noxious weed called Purple Loosestrife. It's a pretty, bright purple plant that does very well in this area. And that's the problem.

Purple Loosestrife degrades streamside habitat and displaces food species used by wildlife. The plant has no wildlife value. A single plant can produce 2.5 million seeds per year. One of the best ways to get rid of the plants is to pull them. Have some plastic bags ready; you don't want to scatter the seeds. That'll just help the plant out.

It's in bloom right now, so it's easy to spot. This is a perfect fall project to acquaint your students with noxious weeds and then to help control one of them. Land management agencies will appreciate your help.

For information and pictures of Purple Loosestrife and other noxious weeds, visit www.blm.gov/education/. Another great resource is www.idahoweedawareness.org. Finally, try a search for Idaho and "noxious weeds." You'll find a wealth of information.

How Safe Is Your Water?

We all know that water is essential to all forms of life. But, where that water comes from, or how it is processed and delivered to our homes is a mystery to most of us. In more rural areas, individual homes may have their own private well or spring fed water system. In more established communities, residents generally connect to a community or municipal system. With over 2,000 public water systems in Idaho, "source water" protection is a huge and expensive undertaking. The source of drinking water may be "surface water" which comes from rivers, lakes, streams, or reservoirs; "ground water" which comes from deep aquifers (underground reservoirs where water is collected in the spaces in rocks below the ground surface); or spring (an area where the subsurface water table and surface ground intersects). Ground water is the source water for approximately 96% of Idaho citizens. In fact, Idaho has the highest per capita use of ground water in the nation.

Public water systems, local governments and state and federal agencies work together to ensure that all public water supplies are safe. The Environmental Protection Agency is responsible for setting the national standards by which water quality is measured. The Idaho Dept. of Environmental Quality (DEQ) is responsible for assuring those standards are met and providing technical support to community systems operators who may need to make

improvements or implement new or expanded developments.

We, as individuals and communities, all share in the responsibility of helping to protect the sources of our drinking water. Regardless of your water's origins, source water protection begins far away from the actual well head or pump at the watershed level. As water moves through the watershed toward the community well it picks up remnants from improper waste disposal or poor land use practices. Water treatment is very expensive, so good planning and community action programs that reduce potential pollution to the water supply can save citizens a great deal of money that can go to other community needs.

Project WET Idaho and Idaho DEQ have joined together to provide teachers with education programs and materials implementing a source water education program in your curriculum. Project WET workshops provide teachers with training and curricular materials. The following web sites are great resources for additional materials and activities for students.

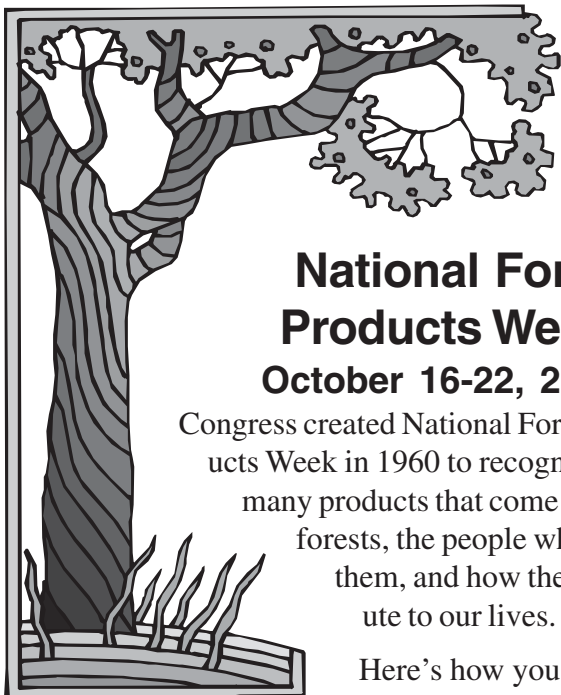
www.deq.state.id.us/water/educ_tools.cfm

www.epa.gov/students/water.htm

www.projectwetusa.org/makeasplash.html

For more information contact Project WET.

TEACHING IDEAS & RESOURCES



National Forest Products Week October 16-22, 2005

Congress created National Forest Products Week in 1960 to recognize the many products that come from our forests, the people who make them, and how they contribute to our lives.

Here's how you and your students can be involved.

Essay Contest: The Idaho Forest Products Commission is holding its 10th annual Essay Contest. Visit www.idahoforests.org for contest guidelines, writing prompts and scoring criteria or contact PLT. Prizes include savings bonds for the winners, and cash for their classrooms. Deadline: 11/1/05.

Elementary: Check out the new video or DVD, *That's How We Build a House*. Students ages 5 and up will learn about everything that goes into building a house. See if they can identify all the forest products along the way! (Parenting Magazine Video of the Year)

High School: We've got free classroom sets of *The Miracle Resource* for you. To preview, go to www.forestinfo.org, click on Products, then Eco-Links.

Website Feature at www.idahoforests.org: A great place for students of all ages to explore the amazing stuff we get from trees! (Click on the Forest Products Week banner.)

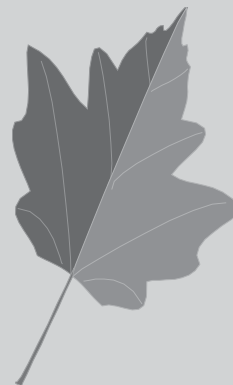
National Environmental Education Week, April 9-15, 2006.

Learn more at www.eeweek.org.

Arbor Day News Idaho Student Wins National Arbor Day Poster Contest

Congratulations to Christy Reid of Hayden, Idaho. She won the 2005 Idaho *and* National Arbor Day poster contests. In April, Christy was honored by Gov. Kempthorne at the state capitol, and also in Washington, DC and Nebraska for national Arbor Day Celebrations. View her poster at www.arborday.org.

Free copies of Christy's award-winning poster are now available. Contact the PLT office.



2006 Poster Contest 5th Grade Classrooms

The 2006 Arbor Day poster contest theme is "Trees are Terrific...In All Shapes and Sizes" Go to www.arborday.org/postercontest/ or contact Deb Cook at 208-378-6576, deb939@aol.com for your free contest packet. Activities correlate with national science and social studies standards. Idaho prizes include savings bonds for students and cash for the classroom! Deadline: 3/10/06.

Reminder to *WILD* about Salmon and *WILD* in the Yellowstone Ecosystem Teachers

Don't forget to send your students' pre & post assessments to Lori Adams for your cool prizes! **IDIG REDDS** bracelets for *WILD* about Salmon teachers and a classroom library for *WYE* teachers!!!



For more information on Earthtracks, contact:

Idaho Dept. of Fish and Game
Project WILD
PO Box 25, Boise ID 83707
800-422-WILD <http://fishandgame.idaho.gov>
Lori Adams (208) 287-2889
ladams@idfg.state.id.us

U.S. Bureau of Land Management
Environmental Education
1387 S. Vinnell Way, Boise ID 83709
www.id.blm.gov/vironedu/
Shelley Davis-Brunner (208) 373-4020
shelley_davis-brunner@blm.gov

Idaho Forest Products Commission
Project Learning Tree
350 N. 9th St., #304, Boise ID 83702
800-ID-WOODS www.idahoforests.org
Michelle Youngquist (208) 334-4061
plt@idahoforests.org

Layout provided by Alyssa Jones, Idaho Fish and Game

IWRRI—University of Idaho
Project WET
322 E. Front., Suite 201, Boise ID 83702
Julie A. Scanlin (208) 332-4414
<http://boise.uidaho.edu/iwrri>
jscanlin@uidaho.edu

Idaho Rangeland Resource Commission
PO Box 126, Emmett ID 83617
877-ID-RANGE www.idahorange.org
Gretchen Hyde (208) 398-7002
irrc@bigskytel.com

Idaho Environmental Education Assn.
2211 S. 2nd Ave., Pocatello, ID 83201
Donny Roush, 208-232-5674 www.idahoee.org
donny@idahoee.org

Thanks to the above, and these additional newsletter sponsors:
Idaho Water Education Foundation, U.S. Forest Service, and Idaho
Department of Lands.

Access **EarthTracks** at www.idahoforests.org/news.htm

ADDRESS SERVICE REQUESTED

PRSRVT STD
U.S. POSTAGE
PAID
BOISE, ID 83702
PERMIT #1



Project Learning Tree/IFPC
350 North 9th Street #304
Boise, ID 83702