

Winter 2007



Welcome to *EarthTracks*,
the environmental
education newsletter for
Idaho teachers. Here
you'll find news from
Idaho's environmental
education leaders and
others interested in
environmental education.

We encourage your
suggestions and thoughts.

Who Knew? Being Outdoors is Good for You!

Have you and your students been outdoors lately? We all know it's a great place to learn—that's not a new concept! From the Nature Study movement in the late 1800s to today's Environmental Education opportunities, the outdoors has been an effective classroom through the ages. The best-selling book, *Last Child in the Woods*, by author and journalist Richard Louv presents evidence that children are losing a vital aspect of healthy development as they spend increasingly less time riding bikes, climbing trees, fishing, or doing much of anything outdoors. Louv coined the term "nature deficit disorder," and this got a national conversation started about children's disconnect with the outdoors.

This *EarthTracks* issue will help you and your students combat nature deficit disorder! Inside you'll learn about a new Project Learning Tree initiative, *Every Student Learns Outside*, and a new educational resource, *No Child Left Unwild*, from Project WILD. This newsletter is packed full of opportunities for educators (that's you!) to get an antidote for your own nature deficit disorder—and get resources to help your students, too!

Also in this issue of Earthtracks:

- Spring and summer workshop schedule
- Idaho EE Summit. Come to Salmon, March 2-3
- Arbor Day and Earth Day
- Grants and scholarships
- Teaching resources and opportunities

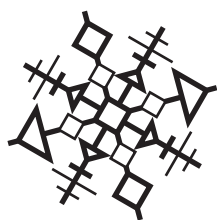


Do you know someone who needs *EarthTracks*?

Anyone is welcome to subscribe. Send us your mailing address (email if you prefer an electronic copy). Contact any of the *EarthTracks* partners listed on the back page for more information.



Help us keep the EarthTracks list up to date. Please let us know of address changes, or if you're receiving duplicate copies.





Workshop Calendar

February 9-10
WILD, Boise

February 23-24
WILD, Pocatello

February 23-24
PLT, Boise

March 2-3
EE Summit, Salmon

March 6-8
WILD, Lewiston

March 9-10
WILD about Raptors, Boise

March 9-10
WET, Boise

March 16-17
PLT Natural Resources/Solid Waste, Boise

March TBA
WET, Twin Falls, Moscow

April 13-14
PLT, Boise

April 13-14
PLT, Grangeville

Late April
PLT Natural Resources/Solid Waste, Blackfoot

Apr. 20-21
WILD about Early Learners, Lewiston

Apr. 20-21
Science on the Range (IRRC), Challis

April TBA
WET, New Plymouth, Idaho Falls, Sandpoint

May 3-5
Into the Watershed (WET), Boise

May 4-5
PLT Wildfires & Weeds, Bonners Ferry

May 11-12
PLT, Coeur d'Alene

May 18-19
WILD, Nampa

(calendar continued on page 3)

PROSPERITY: Feeling at Home on Earth

Idaho Environmental Education Summit 2007



March 2 & 3, Salmon, Idaho
Salmon City Center and Salmon Innovation Center

A conference to celebrate accomplishments in education about our environment.

Register on-line or get more information at www.idahoeec.org

Join us for the Idaho Environmental Education Summit! This year's theme builds on our 2006 examination of education for sustainability. For 2007, the idea is to examine what happens if sustainability is achieved. The concept of "prosperity" encapsulates such success.

Conference features:

- Professional development session: "A Framework for Understanding Poverty" presented by Linda Anderson, principal and special education director, Worland, Wyoming; based on the book by the same name by Ruby Payne, PhD, aha! Processes, Inc.
- Keynote address: "Prospering in Place" by Stan Davis, Mayor of Salmon
- Showcase of Student Work
- Presentations of exemplary programs
- Displays by educational resource providers

Continuing education credits available. Credits from Boise State University, Idaho State University and the University of Idaho will be available.

Registration fees are \$50 for Idaho Environmental Education Association (IdEEA) members, \$30 for full-time students and \$75 for non-members until Feb. 15, 2007. After that, fees will be \$75 for IdEEA members, \$45 for students and \$90 for non-members.

For more information contact Amy at IdEEA.

WORKSHOPS, RESOURCES & OPPORTUNITIES

Idaho Water Camps

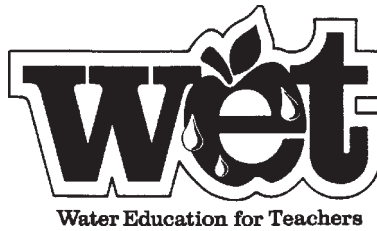
These popular workshops consist of two days of water education curricula and two days of field trips. Interdisciplinary curricula includes *Project WET, Healthy Water Healthy People* and *Conserve Water*. Teachers will gain a better understanding of their local water resources, issues and management and connections with local water resource professionals.

Two credits available at each Water Camp. Pocatello (June TBA), Treasure Valley (June or July TBA), and Lewiston (July 17-20). Sponsored by the Idaho Water Education Foundation and Idaho Water Resources Research Institute at the U of I. The only costs to participants are credit fees, housing and meal costs. Scholarships may be available. **Contact Project WET.**



Into the Watershed

The Idaho Water Resources Research Institute and the Agricultural Research Center offer this 2½ day workshop for secondary teachers. Held at the Reynolds Creek Watershed, it features upland, riparian, stream and water quality monitoring techniques. Curricular materials (*Healthy Water Healthy People* and *Watershed Manager*) support the focus on managing watersheds and linking schools with local grassroots watershed projects. Dates: May 3 (evening in Boise), 4-5 (field study). Cost: \$50/teacher plus credit cost. Scholarships may be available. **Contact Project WET.**



Project WET Idaho Scholarships

Project WET Idaho, with the Idaho Department of Environmental Quality, is working to secure funds to 1) support educator participation in water education workshops, 2) assist teachers in supplying their classrooms with water education materials and equipment, and 3) assist educators or schools who are developing water education site projects and/or programs that will benefit their communities as well as their school. If approved, funds will be available by March 1. **Contact Project WET for application information.**



Dialogue for Kids

Don't forget to check in with Idaho Public Television's monthly call-in science program for kids! Topics for the rest of the year include -

- February: *Hearing*
- March: *Forests, Wetlands and Deserts*
- April: *Wolves*
- May: *Weather*

You'll find additional information (and activities!) about each topic at: <http://idahoptv.org/dialogue4kids/>

Workshop Calendar

- June 11-12
PLT, Genesee
- June 14-15
Focus on Lit with WILD, WET & PLT, Boise
- June 16-20
Fast Food in a WILD World, Fairfield
- June 25-29
Rangeland Ecology IRRRC, McCall
- June 26-27
WILD, Coeur d'Alene
- June TBA
Idaho Water Camp (WET), Pocatello
- June or July, TBA
Idaho Water Camp (WET), Treasure Valley
- Summer TBA
WILD, Boise
- Early Summer
Focus on Literature with WILD, WET & PLT, Coeur d'Alene
- July 9-10
WILD about Salmon, Boise
- July 12-13
WILD about Salmon, Boise
- July 17-20
Idaho Water Camp (WET), Lewiston
- July 16-21
WILD about High Deserts, Pocatello
- July 26-27
WILD about Elk, in Salmon
- July 17-18
Natural Res/Solid Waste PLT, Hailey
- July 19-20
PLT Focus on Communities, Hailey
- August 1-2
WILD about Early Learners, Boise
- August 14-15
PLT Wildfires & Weeds, Coeur d'Alene

FOR CURRENT DATES AND WORKSHOP DESCRIPTIONS

- **WILD:** <http://fishandgame.idaho.gov>
208-287-2889/ladams@idfg.idaho.gov
- **WET:** <http://boise.uidaho.edu/iwrrri>
208-332-4414/jscanlin@uidaho.edu
- **PLT:** www.idahoforests.org/plt1.htm
208-334-4061/plt@idahoforests.org
- **IRRRC:** www.idahorange.org
208-566-4501/jmink@uidaho.edu

WORKSHOPS, RESOURCES & OPPORTUNITIES



WILD about High Deserts

Here's a new workshop for teachers seeking information about life in the Great Basin Desert. Study the fragile environment and learn about unique animals and plants that live there. Held at Camp Taylor north of Pocatello, this workshop has plenty of perks besides the three credits! You'll learn about this incredible habitat and some of the animals that call it home (mule deer, sage grouse, coyote, elk, pygmy rabbits, and herps).

Contact Project WILD.



WILD about Elk

This one credit class will be offered in 3 locations: Salmon, Lewiston and McCall. Idaho is home to the third largest population of elk in the country. It's time we give this critter its due. Check the WILD website for a class near you. Get ideas to incorporate the majestic elk into all subject areas. Contact Project WILD.

No Child Left Unwild

The Idaho Department of Fish and Game is working with several other wildlife agencies to produce a curriculum packet titled "*No Child Left Unwild.*" This packet will include three DVD's produced by the department. DVD titles include "*Fast Food in a Predator's World,*" "*Habitat and Niche: Places to Go, Things to Do,*" and "*Wildlife Mechanics: The Tools that Drive the Resource.*" Three to four age-appropriate activities to complement and reinforce the concepts covered in each movie will be included in the packet. The packet will be available for teachers to purchase in late summer. Look for it! It's going to be good! Contact Project WILD.

WILD about Raptors - North

Teachers from northern Idaho had the opportunity to attend a new WILD workshop in December. They spent an evening talking about raptors in the area and the following day they went on an eagle watching cruise on Lake Coeur d'Alene. Raptors, including a live Bald Eagle, were brought to the classroom by a local rehabilitator. Participants were especially fascinated by the eagle and its 7 foot wing span! Look for this workshop again next winter. Contact Project WILD.

ARBOR DAY APRIL 27, 2007

5th Grade Poster Contest 2007 Theme: *Trees are Terrific...and forests are too!*

Deadline: Entries must be postmarked by 3/12/07. Contact Deb Cook, Idaho Dept. of Lands, at 208-378-6576, deb939@aol.com, or go to www.arborday.org/postercontest/ for a free contest packet and activities. Idaho prizes include savings bonds for 1st, 2nd, and 3rd place students, \$100 cash for winning classroom teachers, a tree and plaque in honor of the state winner at the Idaho Capitol, a tree for the state winner's school to plant, AND entry of the state winner's poster in the National Arbor Day Poster Contest.

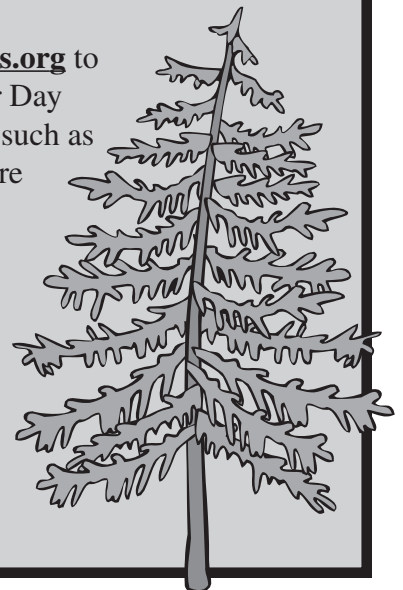
Free Packet of Seeds

Contact the PLT office to request classroom packets (40 seeds per packet) of Douglas-fir tree seeds.

Arbor Day T-shirts

Every year we have a new design for Arbor Day Tree-shirts, available at a very affordable price. Visit www.idahoforests.org soon to see this year's shirt and ordering information.

Visit www.idahoforests.org to learn about other Arbor Day opportunities in Idaho, such as an interactive map where you can register the locations of the tree(s) you planted for Arbor Day, and more!



WORKSHOPS, RESOURCES & OPPORTUNITIES

Rangeland Ecology Workshop

June 25–29, 2007

U of I Field Campus on Payette Lake in McCall, Idaho

Nearly half of Idaho is classified as rangeland! Learn more about this abundant resource and how to bring it into your classroom. Take the environment in which you live, and let it enhance your curriculum. This interdisciplinary workshop provides hands-on assessment techniques, field trips, resource materials, and a great location for learning. University of Idaho, Department of Rangeland Ecology and Management professor Dr. Karen Launchbaugh will lead the workshop, with additional presentations by rangeland management professionals from the U.S. Forest Service, Bureau of Land Management and the Idaho Department of Lands.

Topics include plant ecology, plant/animal interactions, livestock/wildlife interactions, noxious weeds, and management tools. All materials, curriculum and activities are linked to the Idaho Content Standards. Added bonuses...take home materials to use in your classroom.

Early registration (before March 30) is \$100; after March 30, \$125. This non-refundable registration fee covers all materials, field trips, meals, and four nights lodging at the field campus! Space is limited ~ first come, first served. Three continuing education credits from University of Idaho are available at \$82/credit, payable at the workshop. Register on-line at www.idahorange.org. Click the teacher resource tab or contact Jodie at the IRRC.



Science on the Range Workshop

Dates: April 20-21, 2007, Challis, Idaho

Friday evening thru Saturday afternoon

How do plants and animals make their Home on the Range? Are you interested in learning about Idaho rangeland ecosystems, population dynamics and the role of herbivores, while getting hands-on experience in soil sampling and texturing and plant collection?

The University of Idaho, Department of Rangeland Ecology and Management, and the IRRC will offer a 1 credit opportunity to teachers interested in the biology of Idaho rangelands. This two-day event will allow teachers the opportunity to learn about the connections between Idaho rangelands and science.

Each teacher will receive a booklet of classroom activities and lesson plans, and an interactive CD titled Home on the Range. All materials are linked to the Idaho Content Standards. One continuing education credit from the University of Idaho will be available at a cost of \$82/credit. Scholarships available.

A \$25 fee will reserve your spot at this workshop. Contact Jodie at the IRRC for additional information on this great weekend opportunity.

Resources from IRRC

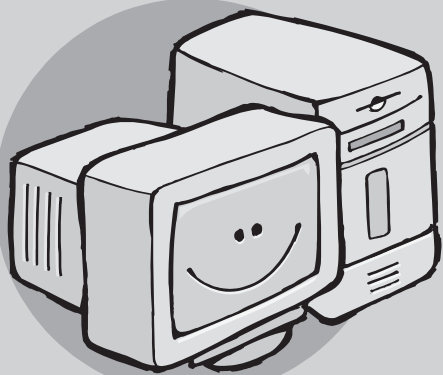
The **IRRC Traveling Trunk** is traveling around the state and is ready for your classroom! This traveling trunk allows you to create your own field trip in the classroom. All resources are included to engage your classroom in numerous fun activities. Activities and lesson plans include: *Sights and Sounds of the Range*, *The Web of Lives*, *Home on the Watershed*, and *Is Your Home on the Range*. Easy to follow lesson plans and activities make this trunk a wonderful resource for 3rd – 6th grades.

An **interactive CD** is available for your students. *Home on the Range* allows students to explore the connection between how plants and animals make their homes on Idaho rangelands. Navigating through this CD will give students a fun way to learn about Idaho plants and animals while participating in step-by-step unit quizzes to test their knowledge.

To learn more about these new IRRC resources, as well as on-going educational tools, visit www.idahorange.org or contact Jodie at IRRC.

The Sawtooth Science Institute offers numerous one-credit workshops in central Idaho. Visit their website at: <http://imnh.isu.edu/ssi> or call 208-788-9686.

WORKSHOPS, RESOURCES & OPPORTUNITIES



PLT Provides Online Support

In 2006, PLT released their new and improved PreK-8th Grade Activity Guide, and the newest high school module, Places We Live. With these new materials comes a variety of support available online at www.plt.org. There's a wealth of resources. Here's a spot to start: At the main website, select Curriculum. Select PreK-8 Guide. Scroll down to Resources for the 2006 PreK-8 Guide. Select **Search by Activity**. Happy exploring!



Relax in the Sun Valley area and Earn 2

PLT Credits! Free Evenings!!!

We've scheduled two workshops back to back so you can relax, enjoy the greater Sun Valley area, and earn credits, too!

Where: Community Campus, Hailey, Idaho

Who: Educators of all grades and subject areas.

When/What #1: July 17-18, PLT Natural Resources & Solid Waste. (Explore where stuff comes from, where it ends up, and what happens to it inbetween. Topics include renewable/nonrenewable resources, recycling, energy, landfills, compost and more).

Hours: Tuesday and Wednesday, 8 :30 am – 4 pm.

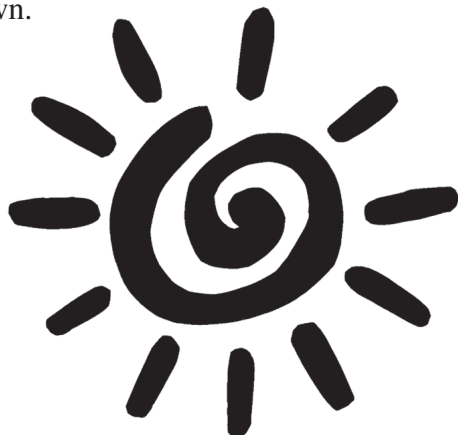
When/What #2: July 19-20, PLT Focus on Communities. (Learn how to investigate your community's history, look at changes over time, and consider its future).

Hours: Thursday and Friday, 8 :30 am – 4 pm.

Cost: \$35 fee per workshop. Meals and lodging on your own.

Credits: 1 per workshop. \$50 per credit payable at workshop(s).

Contact: PLT.



Sustainable Forestry Tour for Teachers

June 20-23. Based out of Lewiston.

Explore north central Idaho forests. All tour travel and expenses paid. VIP treatment. 2 credits available. Explore beautiful forests, go on mill tours, network with educators, eat often and well! See the full-circle process of making products out of trees while sustaining forest ecosystems. Past teacher participants have called it "a trip of a lifetime."

To apply, go to www.idahoforests.org or **contact the PLT office**. Application deadline, March 30, 2007.

Every Student Learns Outside

In response to the growing interest in encouraging children to get outside and combat "nature deficit disorder," Project Learning Tree has launched a national initiative, Every Student Learns Outside, and website www.learnoutside.org, to help educators make outdoor experiences part of their everyday lesson plans. Visit the site to learn more. If you've got a success story of students learning outside with PLT, share it with us for potential posting on the site.

Grants for Idaho Teachers

Apply for up to \$200 to help you teach about Idaho's trees and forests. More info and online application at www.idahoforests.org or contact PLT. Deadline: 8/15.



WORKSHOPS, RESOURCES & OPPORTUNITIES

Air Quality Educational Trunk



for Your Classroom

What do you and your students know about air quality and the pollutants that cause it?

An air quality educational “trunk,” based on the theme, *It's Idaho's Air...Keep it Clean*, is available from the Idaho Department of Environmental Quality to help you and your students better understand the air quality issues that affect us all every day.

What is a “trunk”? A “trunk” is a collection of topic-specific hands-on activities and materials available for loan to teachers. In this case, the topic is air quality.

What do the contents of the trunk teach about?

They explore air quality in general, with a focus on ozone and particulate matter, and on a key cause of those pollutants—automobile emissions.

What's in it? Hands-on activities, information for teachers and students, videos, classroom display materials, and resources and ideas for even more in-depth exploration.

What do I do with it? Use the materials during the month-long loan period to immerse your class in air

quality issues, or begin your discussion of air quality with the videos and display materials during the loan period and keep the other activities and information to continue your exploration of air quality throughout the year.

What grades are addressed? The trunk contains materials for grades 5 – 12. Not all materials are appropriate for all of these grades, but all are clearly marked with the appropriate grade level.

How do I reserve the trunk or learn more? Contact Amy Luft at 208/373-0478, or email amy.luft@deq.idaho.gov

New in the PLT/IFPC Lending Library

Vintage Logging and Forestry

This DVD contains a variety of vintage films showing the logging industry in the early 1900s, the life of a Forest Service ranger, the process of going from a tree to a newspaper in the 1930s, and more!

Building Homes of Our Own

From the National Association of Home Builders and the Idaho Building Contractors Association. We've got two versions of this educational tool: one is the shorter interactive game of the home building and selling process (several copies available), and the other is the complete CD (2 copies in our library) which applies real-life context to your math, science, technology, social studies and English curricula. Teacher guide included with the complete CD.

Contact PLT for more information.

National EE Week 2007

April 15-22, 2007

The National Environmental Education & Training Foundation announces 2007 National Environmental Education Week (NEEW). NEEW is designed to increase the educational impact of Earth Day by creating a full week of educational preparation, learning, and activities in K-12 classrooms, nature centers, zoos, museums, and aquariums. New features added for 2007 include The Richard C. Bartlett Award for Environmental Education and an online Nature Bee. Visit the website for details and sign up! Contact: Karen Schultz at eeweek@neetf.org
OR <http://www.eeweek.org>





For more information on Earthtracks, contact:

Idaho Dept. of Fish and Game
Project WILD

PO Box 25, Boise ID 83707
<http://fishandgame.idaho.gov>
Lori Adams (208) 287-2889
ladams@idfg.idaho.gov

U.S. Bureau of Land Management

Environmental Education
1387 S. Vinnell Way, Boise ID 83709
www.id.blm.gov/envirovedu/
Shelley Davis-Brunner (208) 373-4020
shelley_davis-brunner@blm.gov

Idaho Forest Products Commission

Project Learning Tree
350 N. 9th St., #304, Boise ID 83702
800-ID-WOODS www.idahoforests.org
Michelle Youngquist (208) 334-4061
plt@idahoforests.org

Layout provided by Eric Stansbury, Idaho Fish and Game

IWRRI—University of Idaho
Project WET

322 E. Front., Suite 201, Boise ID 83702
Julie A. Scanlin (208) 332-4414
<http://boise.uidaho.edu/iwrri>
jscanlin@uidaho.edu

Idaho Rangeland Resource Commission

PO Box 126, Emmett ID 83617
877-ID-RANGE www.idahorange.org
Jodie Mink (208) 566-4501
jmink@uidaho.edu

Idaho Environmental Education Assn.

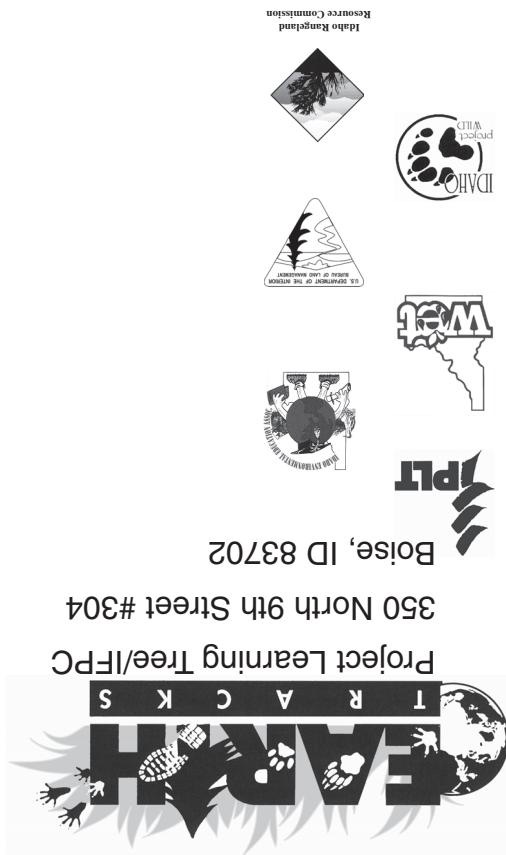
P.O. Box 791, Lava Hot Springs, ID 83246
Amy Pike (208) 232-5674 www.idahoe.org
amy@idahoe.org

Thanks to the above, and these additional sponsors: Idaho Water Education Foundation, U.S. Forest Service, and Idaho Dept. of Lands.

Access *EarthTracks* at www.idahoforests.org/news.htm

ADDRESS SERVICE REQUESTED

PRSR STD
U.S. POSTAGE
PAID
BOISE, ID 83702
PERMIT #1



Project Learning Tree/IFPC
350 North 9th Street #304
Boise, ID 83702