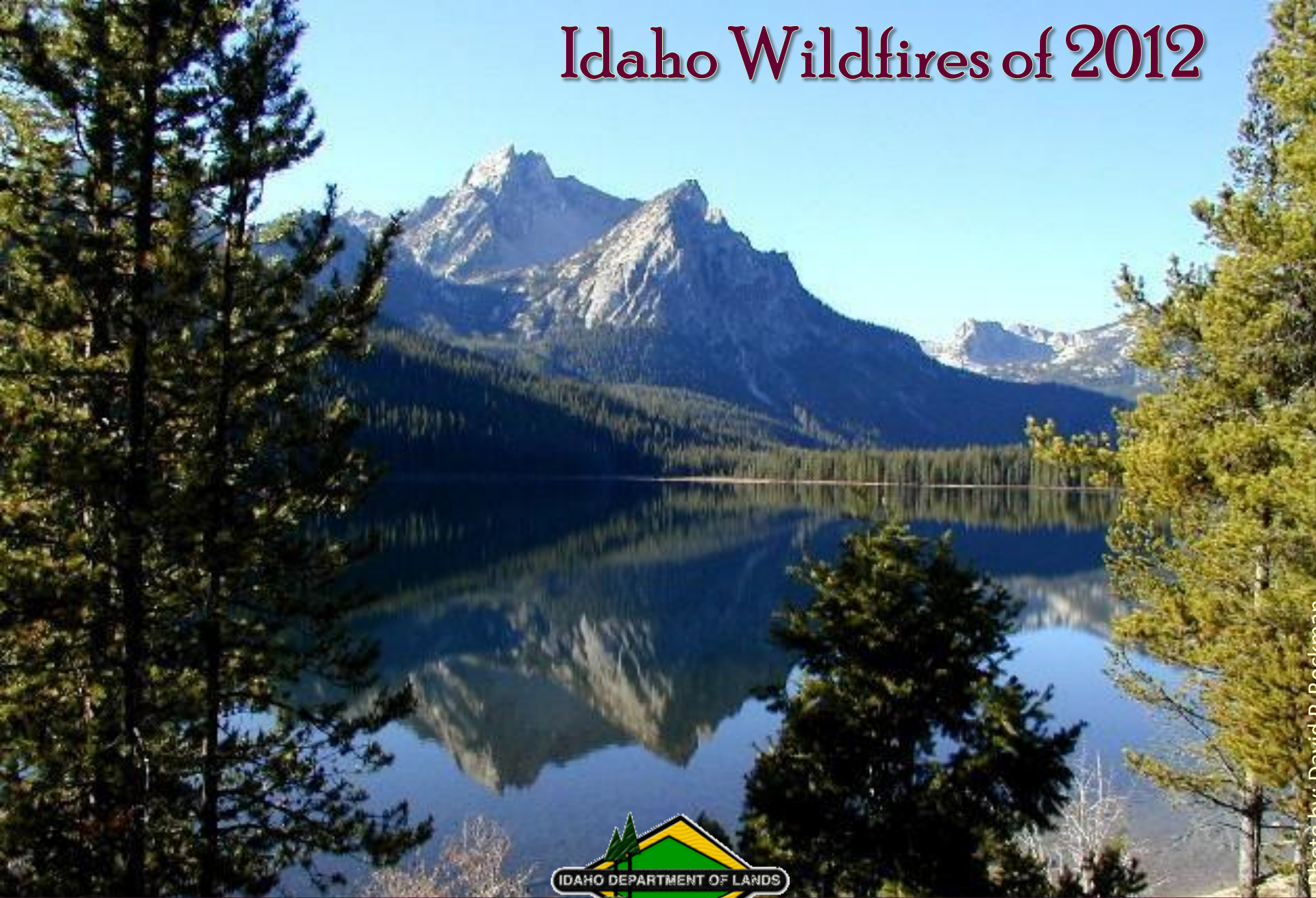


Idaho Wildfires of 2012



Forestry Day at the Legislature

February 19, 2013

Photo by: David P. Beckman

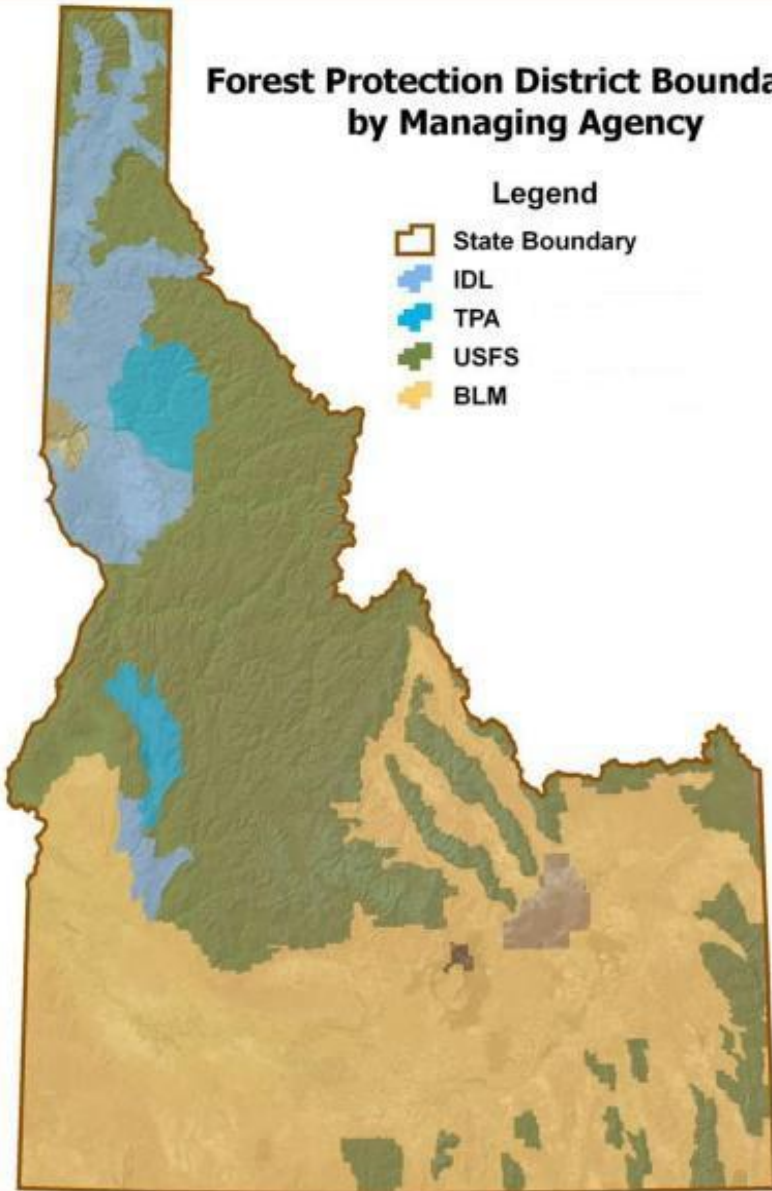


IDL Fire Program

Forest Protection District Boundaries
by Managing Agency

Legend

-  State Boundary
-  IDL
-  TPA
-  USFS
-  BLM



- ~ 6.3 million acres
- Initial Attack Organization
- ~ \$10 million annually for pre-suppression budget
 - ✓ Landowner assessments
 - ✓ General Fund
 - ✓ Federal Funds
- Suppression Costs paid out of Deficiency Warrants (General Fund)
- 40 full-time employees & ±140 Seasonal Firefighters
- Offset Agreement with Federal Partners



IDL Fire Management

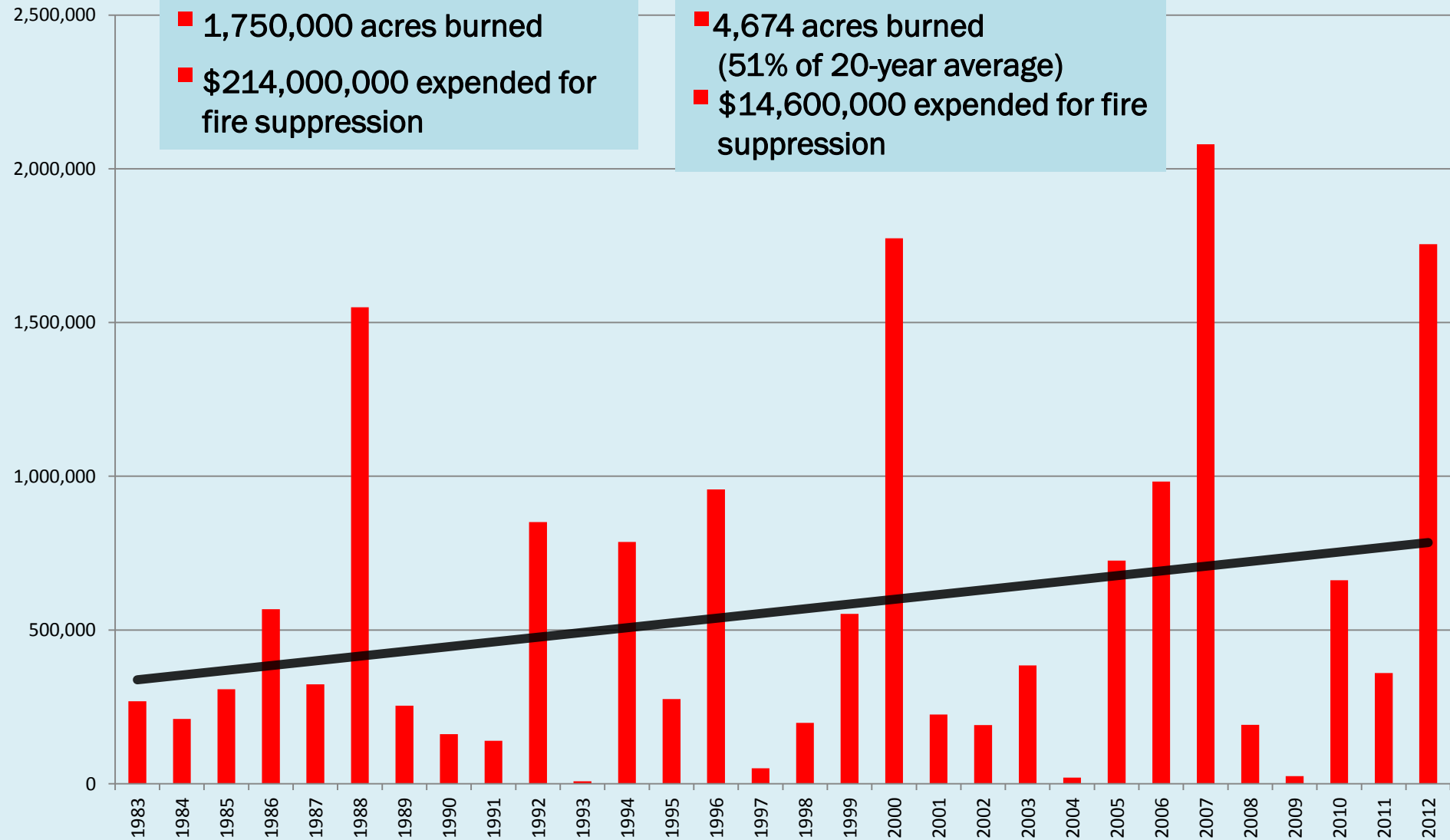
2012 Fire Season

Statewide

- 1,750,000 acres burned
- \$214,000,000 expended for fire suppression

IDL Protection

- 4,674 acres burned (51% of 20-year average)
- \$14,600,000 expended for fire suppression





Fire Cache
Pre-Positioning



Added the "Fire
Boss" to IDL's
Aviation Contract



Idaho's First
Rangeland Fire
Protection Association



Initiating Online
Burn Permit Service



Current & Future Challenges

- Declining Forest Health & Increasing Fuel Loads
- Adequate Funding & Personnel
- Expansion of Homes in the Forest
- Availability & Use of Interagency Teams
- Federal & State Land Management & Fire Policy Differences
- Impacts to Air & Water Quality, Human Health & Safety, Etc.



Forestry Day at the Legislature

Questions?

Contact:

David Groeschl

State Forester & Division Administrator of Forestry & Fire

(208) 666-8604

dgroeschl@idl.idaho.gov

Sustainable Forests – Sustainable Education – Sustainable Communities