

Spring 2010



Welcome to EarthTracks, the environmental education newsletter for Idaho teachers. Here you'll find news from Idaho's environmental education leaders and others interested in environmental education. We encourage your suggestions and thoughts.

WOW!

Professional Development Opportunities Galore!

This issue of *EarthTracks* is overflowing with opportunities for you to earn credit and receive proven education activities that will help you cover your curriculum and meet standards. You will leave these classes refreshed, energized and ready to share what you learn with your students, friends, family and possibly even random people on the street! Inside this jam-packed issue of *EarthTracks*:

- ▶▶ Spring, summer and early fall workshop calendar
- ▶▶ Idaho Environmental Education Conference and field trips
- ▶▶ IdEEA has a new director
- ▶▶ Environmental Literacy Planning
- ▶▶ Arbor Day, Earth Day and National EE Week
- ▶▶ Kits for loan
- ▶▶ National Rangeland Event
- ▶▶ Resources on archaeology, rangeland history and much, much more!



Do you know someone who needs **EarthTracks**? Anyone is welcome to subscribe. Send us your mailing address (email if you prefer an electronic copy). Contact any of the *EarthTracks* partners listed on the back page for more information.



Help us keep the EarthTracks list up to date. Please let us know of address changes, or if you're receiving duplicate copies.



CALENDAR AND EE CONFERENCE

Workshop Calendar

January 29-30

Project WET—Boise

February 5-6

PLT Forests of the World (H.S. teachers)—Boise

February 19-20

Project WILD—Boise
PLT "Talk Trash"—Boise

February 22-24

Project WILD—Lewiston

February 26-27

Project PLT—Burley

March 4

Outside Day
www.outsideday.org

March 5-6

Idaho EE Conference—Boise
www.idahoeec.org

March 12-13

WILD About Raptors—Boise

March 19-20

PLT Focus on Early Childhood—Boise

March 26-27

Project WET—Twin Falls

April 9-10

WILD About Desert Grouse—Jerome
Project Learning Tree—Boise
Project WET—Idaho Falls

April 16-17

PLT Focus on Early Childhood—Idaho Falls
Western National Rangeland Career Development Event—Twin Falls

April 23-24

WILD About Early Learners—Boise
PLT Focus on Energy (M.S. teachers)—Coeur d'Alene

Apr 29-May 1

WET Into the Watershed—Boise & Reynolds Creek

May 7-8

WILD About Turkeys—Coeur d'Alene
PLT Walk in the Forest—CdA/Athol

June 9-10

PLT Walk in the Forest—Orofino

June 14-15

PLT Wildfires & Weeds—Heise Hot Springs (east of Idaho Falls)

Idaho Environmental Education Conference 2010

Idaho Learns Outside

March 5th and 6th, 2010
Owyhee Plaza Hotel, Boise, ID
Conference Highlights



Douglas Wood—singer/songwriter and author
Dr. Gregory Smith of Lewis and Clark College, Portland, OR

Robert Steelquist, Education and Outreach Coordinator, Olympic Coast National Marine Sanctuary
Showcase of Environmental Education Projects
Environmental Educator of the Year Awards

Twelve concurrent sessions
Displays by Educational Resource Providers

Field trips

Silent auction and raffles--Please bring auction items to donate!

Conference Fees

IdEEA member \$85

Non-member \$110

Full-time student \$35

Scholarships and Continuing Education Credit Available!

Register on-line at

www.idahoeec.org

or contact Larry Mink

at IdEEA 208-232-5674,

ldminkster@verizon.net.

Workshop Calendar

June 16-17

Focus on Literature w/ WILD, WET & PLT—Boise
WILD About Idaho's Native Zoo—Pocatello

June 22-24

Idaho Water Camp (WET)—Twin Falls

June 23-24

Project WILD—Idaho Falls

June 28-July 2

Fast Food in a WILD World—Fairfield

June 28-29

PLT Wildfires & Weeds—Wallace

June 29-30

Water Awareness Week Workshop—Boise

July 7-8

Project WET—Nampa

July 8-9

WILD About Salmon—Boise
PLT Talk Trash—St. Maries

July 13-14

River Ecology with WET & WILD—Riggins

July 15-16

WILD About Elk—McCall

July 19-22

From Treetops to Aquifers (PLT, WET)—Coeur d'Alene

July 27-29

Idaho Water Camp (WET)—Lewiston

July 28-29

PLT Wildfires & Weeds—Boise

August 2-3

PLT Wildfires & Weeds on the River—Stanley

August 3-4

Intro to the Boise WaterShed (WET)—Boise
WILD About Early Learners—Boise

August 10-12

Idaho Water Camp (WET)—Pocatello

August 11-12

WILD About Early Learners—Post Falls

September 10-11

WILD About Raptors—Boise

September 24-25

WILD About Zoo Boise—Boise
PLT Walk in the Forest—Boise/Idaho City
WILD About Early Learners—Pocatello

IN THE SPOTLIGHT...

Watersheds and Riparian Zones Field Trip During Idaho EE Conference

Join the BLM and the Boise WaterShed Education Center on March 6 at the Idaho EE Conference for a tour of Idaho's first-ever water education center and a walk along the Boise River. BLM Hydrologist Bryce Bohn will share how riparian areas work and how to tell if they are healthy and functioning as they should. The new BLM riparian curriculum, *Holding onto the Green Zone*



Action Guide and Leader's manual will be free to field trip participants. Limited to 25 participants. Other exciting conference field trip options: "Three Cheers for Trees" and "Outside Learning Without a Bus." Sign up for the conference today at www.idahoee.org.

Idaho's Environmental Literacy Plan

As part of the reauthorization of the Elementary and Secondary Education Act, an amendment called No Child Left Inside is moving through Congress to provide funding for enhanced teaching through environmental education. If passed, this legislation would increase EE providers' ability to support classroom efforts and expand outreach to educators. To qualify for the funding Idaho must have in place a locally-based Environmental Literacy Plan (ELP). Development of Idaho's ELP will involve a wide range of partners with perspectives from education, business, resource professionals, policy makers, and others who are interested. The goal is to have a plan that fully reflects Idaho's needs, perspectives, resources and economic realities. The Idaho Environmental Education Association is leading the effort to bring these entities together and has applied for an EPA grant to cover planning costs. For more information and to monitor progress on this effort visit www.idahoee.org.

Idaho Environmental Educator of the Year Awards

The time is now..... Nominate individuals who have made significant contributions to Idaho's environmental education community!

The Idaho Environmental Education Association is accepting nominations for the 2009 Idaho Environmental Education Awards, in the following categories:

Elementary Environmental Educator of the Year

Secondary Environmental Educator of the Year

Professional Environmental Educator of the Year

Deadline: February 12, 2010

Recipients will be recognized at the Idaho EE Conference March 5-6. To nominate a deserving educator, go to www.idahoee.org or contact Laron Johnson at ljohnson@sd251.org.

IdEEA Welcomes New Executive Director

The Idaho Environmental Education Association (IdEEA) welcomes its new Executive Director, Larry Mink. Larry takes over for Amy Pike, who directed IdEEA for over three years. Amy's tireless commitment to the Association the past three years is greatly appreciated. She leaves behind a well organized and sound Association.

Larry worked for Idaho State Parks as the Education/Interpretive Coordinator for the past 24 years, developing a statewide parks education program. Before coming to Idaho in 1985, he held a similar position with the North Dakota State Park system. He continues to teach "Interpreting Natural and Cultural Resources" at his alma mater, the University of Montana, each spring semester in Missoula, MT. Larry resides in Coeur d'Alene, ID with his wife, Sheryl, of 33 years and 14 year old daughter, Destiny. Welcome to IdEEA, Larry!



WORKSHOPS, RESOURCES & OPPORTUNITIES



Project Archaeology Presents: Investigating Shelter Online Course

Learn to look at your surroundings through the eyes of an archaeologist. *Investigating Shelter* is a two-credit online course for teachers, grades 3-6, starting March 15. The supplementary science and social studies curriculum unit consists of nine lessons which guide students through the archaeological study of shelter. The \$160 course includes the curriculum guide and course facilitation; it requires 4 1/2 hours of self-directed study per week. Contact Madlyn Runburg at 801-671-7713 or mrundburg@umnh.utah.edu by March 1. For more information, go to <http://www.projectarchaeology.org/OnlineCourse-pdf.pdf>.

Project Archaeology is the designated heritage education curriculum for the Bureau of Land Management.

What's WILD about Idaho's Native Zoo?

Did you know that Pocatello has one of the only *native* wildlife zoos in North America? This zoo, with roots back to 1932, began as a place to keep injured or orphaned native animals. It is now home to over 50 species of North American animals. On June 16-17, Project WILD is teaming up with this unique zoo to share ideas with teachers. You are guaranteed to leave with plenty of great information, new activities, and memorable experiences to share in your classroom. Also check out *WILD About Zoo Boise* in September.

In the Works: PLT and WET Partner with iSTEM

As *EarthTracks* goes to the printer, Project WET and Project Learning Tree are exploring the possibility of offering two classes with the Idaho Science Technology Engineering and Mathematics (iSTEM) program. The classes would take place July 19-22 in Coeur d'Alene and Twin Falls. Check our websites for updated info!

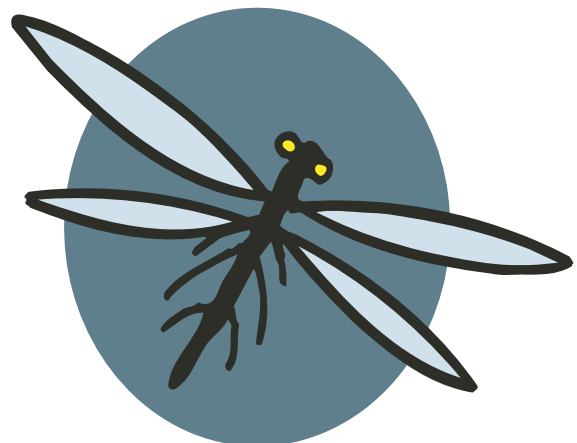
Idaho Water Camps—Pocatello, Twin Falls and Lewiston.

See page 2 for dates.

Enjoy two days of water education curricula and a day of field trips. Interdisciplinary curricula include *Project WET*; *Healthy Water Healthy People* and *Conserve Water*. Gain a better understanding of your local water resources, issues and management and connect with local water resource professionals. Two credits available at each Water Camp. Registration fee \$75 before May 1 and \$100 after. Sponsored by the Idaho Water Education Foundation and Idaho Water Resources Research Institute at the U of I. Contact Project WET.

Don't Miss Fast Food in a WILD World

Join Project WILD at the scenic Sawtooth Methodist Church camp north of Fairfield to learn about wolves, bears, cougars, dragonflies, bats and most anything else that is an animal eater! 6/28-7/2. Two Credits.



WORKSHOPS, RESOURCES & OPPORTUNITIES

Sustainable Forestry Tour, June 22-25 Celebrating 10 Successful Years!

This year the Sustainable Forestry Tour heads further north, operating out of Post Falls. Third-twelfth grade teachers and counselors are invited to apply for this educational trip of a lifetime. Apply online and get more information at www.idahoforests.org/tour.htm or contact the PLT office.

Into the Watershed

The Idaho Water Resources Research Institute and the Agricultural Research Service offer this 2 ½ day workshop for secondary teachers. Held at the Reynolds Creek Experimental Watershed, it features upland, stream, riparian, and water quality monitoring techniques. Curricular materials (*Healthy Water Healthy People and Watershed Manager*) support the focus on managing watersheds and linking schools with local grassroots watershed projects.

April 29 (evening in Boise)

April 30 & May 1 (field study at Reynolds Creek)

Cost: \$50 plus credit cost. Scholarships may be available. Contact Project WET.

Dancing in the Desert

Come to Jerome for the *WILD about Desert Grouse* class on April 9-10! You won't want to miss the early morning field trip to a lek (that's where sage grouse dance)! Sage grouse are a very vulnerable species in Idaho. You'll be hearing more and more about them in the news. Be the teacher who is in the know and able to share great information with your students.



Take a "Walk in the Forest" with PLT!

PLT is branching out with these field-oriented classes. During May's class, we'll visit the scenic Cedar Mountain Farm and learn about forests and their relation to the Spokane-Rathdrum Aquifer.

In June, the Orofino class will spend a day at the beautiful Reggear Tree Farm. In September, we begin in Boise, and then spend Saturday exploring the forests in and around Idaho City.

Contact PLT.



Wildfires & Weeds classes explore new territory. Plan a family trip!

Even if you've taken a *Wildfires & Weeds* class, you'll want to explore them in other settings. This summer we've got one in Wallace (walk the Pulaski Trail while learning about the 1910 Fire), in eastern Idaho at Heise Hot Springs (on the Snake River—camping is available!), on the Salmon River near Stanley (includes one class day on a raft), and in the foothills on the edge of Boise. Bring the family along to enjoy all these areas have to offer, while you enjoy the class! Contact PLT.

WORKSHOPS, RESOURCES & OPPORTUNITIES

Explore Energy, Water, and Trees in April!

Earth Day has been observed every year since April 22, 1970. Happy 40th B-EarthDay! Many people just make a month of it. Here's how:

National Environmental Education Week, April 11-17, 2010

Theme: Be Water and Energy Wise. Visit www.eeweek.org to register, receive special discounts on EE supplies, get lesson plans and ideas, and much, much more!

NEW! PLT Focus on Energy Class for Middle School educators.

The workshop will be piloted in Coeur d'Alene on April 23-24. Contact PLT.



ARBOR DAY

Arbor Day is April 30. It's a time to celebrate everything trees do for us, plant more trees and manage those we already have.

-Fifth graders are invited to compete in the annual poster contest. This year's theme is *Trees are Terrific—and Energy Wise!* Get information and activities at www.arborday.org.

ENTRY DEADLINE: March 12, 2010.

Download the full-color version of the 2009 winning poster by Jillian Orr of Gate City Elementary in Pocatello at www.idahoforests.org/img/pdf/09arbormposter.pdf.

-In March, the 2010 Idaho Arbor Day t-shirts will be available to order.

Check www.idahoforests.org/arborday.htm to see the new design. They will be priced to sell!

-Check with your city about local Arbor Day celebrations and how to be involved.



Wildlife Express for Early Learners

This FREE publication is now online at <http://fishandgame.idaho.gov>. Each correlates with the monthly *Wildlife Express* issues, making for great book buddy materials! Soon we will also post issues relating to activities in your *WILD About Early Learners* guide!

Papermaking & Forestry Lending Kits Get a Facelift!

These popular kits from the Idaho Forest Products Commission are newly streamlined, refurbished, and ready for checkout. Contact PLT.

“The Big Blowup.” 1910 Fires – One Hundred Years Later

This year marks the centennial of one of the largest fire events in recorded history—and it happened in Idaho and Montana. There will be several opportunities to learn more and be involved in commemorative events. Get started by doing an Internet search for “1910 Fire.” You can also attend the PLT *Wildfires & Weeds* class in Wallace, June 28-29.

NEW! PLT Environmental Experiences for Early Childhood

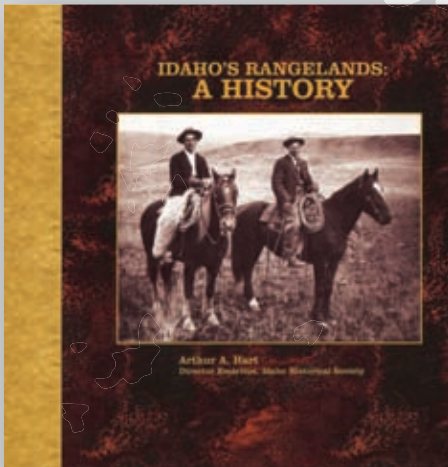
This new guide and accompanying music CD integrates nature-based exploration, art, literature, math, music & movement, and outdoor play into early childhood education programs. Come to the new PLT *Focus on Early Childhood* workshops this spring! (See page 2 for dates).

ATTENTION:
Project WILD Teachers!
The wolf trunk is now ready for checkout. Contact Project WILD to reserve this and other trunks.

WORKSHOPS, RESOURCES & OPPORTUNITIES

Idaho's Rangelands: A History

An historical perspective of Idaho's rangelands written by Arthur A. Hart (Director Emeritus, Idaho Historical Society). Published by Idaho Rangeland Resource Commission.



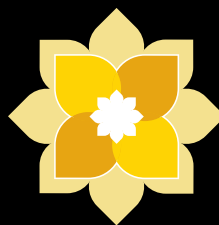
Arthur Hart is a renowned historian and his personal interest in the people who settled Idaho make him the ideal author for this book. One of the results of his many years of research is this brief history of Idaho's rangelands and the people who have labored to make a living on them. Mr. Hart begins with archeological records of human habitation about 12,000 years ago and continues through the era of open range, changes of ownership and changes due to topography, climate and products of the soil. The book is filled with historical photographs documenting Idaho's ranching industry collected over his many years of research. The book retails for \$17.95 and is a perfect gift for the history buff! Contact IRRC or visit www.idahorange.org to order your copy today.

Idaho Students Test Skills Out on the Range PLUS: National Event in Idaho this April!



A record number of students participated in this year's FFA **Rangeland Career Development Event**, marking another successful contest aimed at helping Idaho high school students learn more about field skills and career opportunities associated with the rangeland management profession. The event took place on a beautiful rangeland site not far from Burley on October 13th. Kudos to the event organizers, Kelly Crane and Ken Sanders, the current and former University of Idaho Rangeland Extension Specialists located out of Twin Falls.

This year's top five teams have an exciting new opportunity. They are invited to attend the first **Western National Rangeland Career Development Event** near Twin Falls this April. Top teams from Nevada and Utah will also participate in this new FFA contest. Idaho's 1st place team is from Rigby, coached by Jon Hogge and Robert Hale, followed by Fruitland, Hagerman, Kimberly, and Kuna. The top five individuals were Joseph Hale (Rigby), Michelle Mortimer (Rigby), Toby White (Payette), Jacob Houdek (Fruitland), and Hayden Boll (Cambridge).



April 11-17, 2010

**National Environmental
Education Week**

A National Environmental Education Foundation Program

Theme: Be Water and Energy Wise.

Visit www.eeweek.org to register, receive special discounts, get lesson plans and ideas, and much, much more!



For more information on Earthtracks, contact:

Idaho Department of Fish and Game

Project WILD

PO Box 25, Boise ID 83707
<http://fishandgame.idaho.gov>
Lori Adams (208) 287-2889
lori.adams@idfg.idaho.gov

U.S. Bureau of Land Management

Environmental Education
1387 S. Vinnell Way, Boise ID 83709
www.id.blm.gov/envirovedu/
Shelley Davis-Brunner (208) 373-4020
shelley_davis-brunner@blm.gov

Idaho Forest Products Commission

Project Learning Tree

350 N. 9th St., #500, Boise ID 83702
800-ID-WOODS www.idahoforests.org
Michelle Youngquist (208) 334-4061
plt@idahoforests.org

*Layout provided by
Sandy Gillette McBride, Idaho Fish and Game*

IWRRI—University of Idaho

Project WET

322 E. Front., Suite 201, Boise ID 83702
<http://boise.uidaho.edu/default.aspx?pid=33434>
Julie A. Scanlin (208) 332-4414
jscanlin@uidaho.edu

Idaho Rangeland Resource Commission

PO Box 126, Emmett ID 83617
877-ID-RANGE www.idahorange.org
Gretchen Hyde (208) 398-7002
ghyde@idahorange.org

Idaho Environmental Education Assn.

3737 Purcell Place, Coeur d'Alene ID 83815
www.idahoee.org
Larry Mink (208) 232-5674
idminkster@verizon.net.

Thanks to the above, and these additional sponsors: Idaho Water Education Foundation, U.S. Forest Service, and Idaho Dept. of Lands.

Access *EarthTracks* at www.idahoforests.org/news.htm



ADDRESS SERVICE REQUESTED

PRSR STD
U.S. POSTAGE
PAID
BOISE, ID 83702
PERMIT #1



Project Learning Tree/IFPC
350 North 9th Street #500
Boise, ID 83702