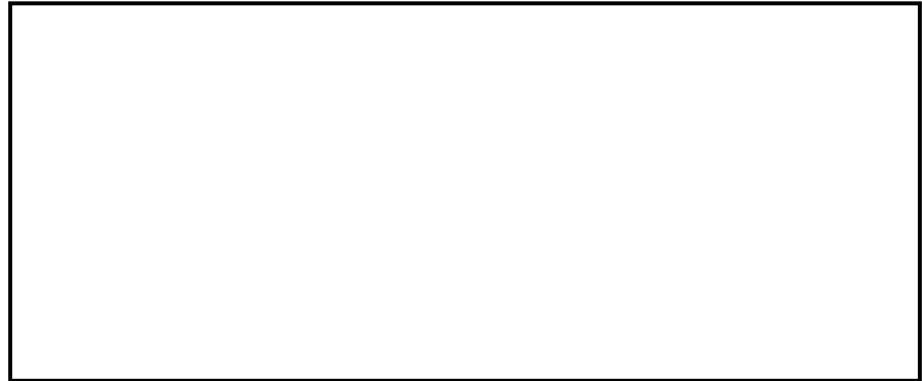


Idaho Forest Group  
PO Box 220  
Laclede, ID 83841



## Quick Reference

### Regence Blue Shield

888-367-2117

### Delta Dental

800-356-7586

### Vision Service Plan

800-877-7195

### Flex-Allegiance

877-424-3570

### Randall & Hurley

### 401(k) Advisor

800 676 0262

### 401(k) Administration

888 682-4406

### EAP-Reliant

### Behavioral Health

866-750-1327

### 24-Hour Nurse Line

800-856-8543

## Common Knot Types

## Terms of the Trade

While knots are generally classified as defects, some, because of size or quality, do not affect the grade or usability of the piece. A knot occurs when a branch or limb embedded in the tree is cut through in the manufacturing process. Knots are classified according to size, type, and location.

**Unsound** a knot containing decay.

**Encased** a knot whose rings of annual growth are not intergrown with those of the surrounding wood.

**Intergrown** a knot partially or completely intergrown on one or two faces with the growth rings of surrounding wood.

**Loose** a knot not held tightly in place by growth or position, one that cannot be relied on to remain in place.

**Fixed** a knot that will hold its place in a dry piece under ordinary conditions; one that can be moved under pressure but not easily pushed out of the surrounding wood.

**Pith** a sound knot containing a pith hole not over 1/4" in diameter.

**Sound** a knot that is solid across the face, as hard as the surrounding wood, and shows no indication of decay.

**Star-checked** a knot having radial checks.

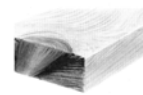
**Tight** a knot fixed by growth or position so as to retain its place.

**Firm** a knot that is solid across its face but contains incipient decay.

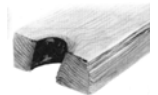
**Watertight** a knot whose annual rings of growth are completely intergrown with those of surrounding wood on one surface of the piece and which is sound on the surface.



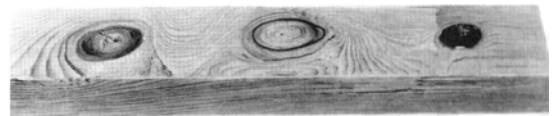
**A.** Sound, watertight, tight, intergrown knot with radial checks.



**B.** Sound, encased, fixed, round knot through two wide faces.



**C.** Round knot hole through two wide faces, resulting from a loose knot.



**D.** Sound, tight, intergrown, watertight spike knot through three faces.



**E.** Intergrown round knot through all four faces.



**F.** Sound, tight, round pith knot through two narrow faces.

