

Fall 2003



*Welcome to  
EarthTracks, the  
environmental  
education newsletter  
for Idaho teachers.  
Here you'll find  
news from Idaho's  
environmental  
education leaders  
and others  
interested in  
environmental  
education. We  
encourage your  
suggestions and  
thoughts.*

## **No Teacher Left Behind? Our Correlations Website Can Help!**



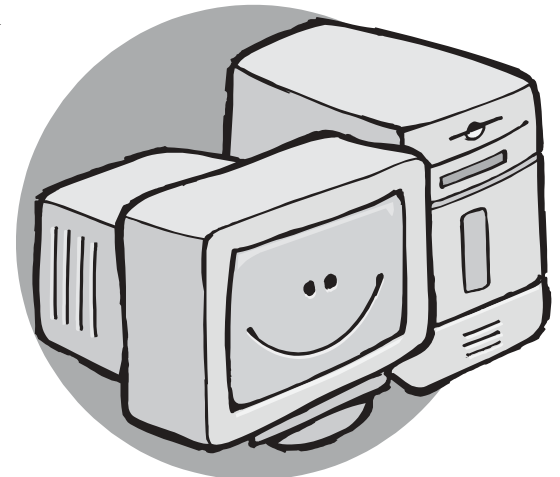
Don't be left behind—visit the “PROJECTS” new website at <http://sde2.sde.state.id.us/CSA/default.asp>. (We're working on a more friendly address...)

Project Learning Tree, Project WILD and Project WET joined forces to provide correlations between our activities and the Idaho Achievement Standards.

This tool will help you teach what you love! While pressures on teachers to address standards and prepare students for testing grow, so does evidence that teaching about the environment is an efficient and effective way for students to learn. By its very nature, environmental education encompasses numerous subjects and skills. The correlations website can help you use PLT, WILD and WET activities, while easily making the connection to standards.

At the website, you may search in a variety of ways. A keyword search will net all PLT, WILD and WET activities addressed to that keyword. When you click on a specific activity you'll get an overview of the activity and a list of all the standards the activity addresses in Science, Math, Language Arts and Social Studies.

Since the website is new, we're still doing some fine-tuning. We need your help. Try it out. Let us know what you like, and provide suggestions for making it better. We look forward to hearing from you.





## Workshop Calendar Fall 2003 Dates

**September 19-20**

WILD, Boise

**September 27**

WILD about Refuges –  
Bear Lake NWR, Montpelier

**October 2**

PLT, during PIE conference, Lewiston

**October 10-11**

WET, Boise

**October 17-18**

PLT Walk in the Woods  
Forest Tour, Boise area

**October 24-25**

PLT, Boise

**November 14-15**

WET, Boise

**Late Fall**

WET, Groundwater Awareness, Boise

**TBA**

WET, Lewiston  
WET, Pocatello  
PLT, Twin Falls  
PLT, Eastern Idaho  
PLT, North Idaho

**January 24, 2004**

WILD about Refuges –  
Minidoka NWR, Minidoka

**March 5-6, 2004**

Idaho EE Summit, Boise

More workshops have been scheduled.  
Contact us for more information

### FOR MORE INFORMATION:

WILD: 208-287-2889  
ladams@idfg.state.id.us  
WET: 208-422-0737  
jscanlin@uidaho.edu  
PLT: 208-334-4061  
plt@idahoforests.org

## WILD about Refuges

March 14th, 2003 marked the National Wildlife Refuge System's 100th Anniversary. In 1903 President Teddy Roosevelt established the first refuge, Florida's Pelican Island, a small shell and mangrove-covered island in the Indian River. One hundred years later, the National Wildlife Refuge System has evolved into a 95-million acre network of lands and waters protecting many of America's—and the world's—most unique natural areas as habitat for an amazing variety of wildlife. Wildlife viewing has become the number one outdoor activity in our country.



A grant-funded project written by the U.S. Fish and Wildlife Service and the Audubon Society is providing wildlife education resources to area schools and teachers. Themes are wetlands and wildlife, songbirds, birds of prey and Idaho predators. Project WILD workshops (7 hours long) have been set up in cooperation with Idaho Department of Fish and Game. Workshop dates and locations are as follows:

- **Bear Lake National Wildlife Refuge Sep. 27, 2003—Montpelier**
- **Minidoka National Wildlife Refuge Jan. 24, 2004—Rupert**
- **Camas National Wildlife Refuge May 15, 2004—Idaho Falls**
- **Minidoka National Wildlife Refuge June 14, 2004—Rupert**

Participants of the workshop will receive Project WILD guides and gain unique information related to each refuge to share with their students. For those interested in earning credit, a continued workshop of 8 hours, at a different time and place, will be offered for one continuing education graduate credit.

These workshops are designed to promote wildlife education and to commemorate the 100 year anniversary. To sign up, please contact

Kathi Stopher  
Southeast Idaho Refuge Complex  
4425 Burley Drive, Suite A  
Chubbuck, ID 93202  
Email: kathi\_stopher@fws.gov  
Phone 208-237-6617 ext 27.



## Learning Locally Through EIC

EIC means using your local Environment as an Integrating Context for learning.

In eight Idaho schools, students are doing just that: investigating local issues while preparing to exceed the Idaho Achievement Standards. These schools are demonstrating The EIC Model™. EIC comes to Idaho with an impressive record of improving student achievement in 12 other states.

### Teachers designed EIC units during the summer.

#### Organizing questions for 2003-04 are:

- **Hagerman Elementary School**, Hagerman—How can we provide sustainability for the aquaculture industry?
- **Pocatello Community Charter School**, Pocatello—In what ways does weather data affect decisions people make?
- **Renaissance Public Charter School**, Moscow—How do the natural and social systems of our watershed affect Paradise Creek?
- **St. Paul's Catholic School**, Nampa—What is the story of Wilson Ponds?
- **Salmon Alternative High School**, Salmon—What is the relationship between Kids Creek watershed and residents of Salmon?
- **Shoshone-Bannock Jr./Sr. High School**, Ft. Hall—What is the relationship between the natural systems of the reservation and tribal health?
- **Valley View Elementary School**, Bonners Ferry—How can we develop a new wetland at the Kootenai National Wildlife Refuge to be educational, naturally productive, and have no negative impacts on the city of Bonners Ferry's water supply?
- **Wood River Middle School**, Hailey—How does the local watershed affect the people of the Wood River Valley?

The Idaho EIC Network is coordinated by the Idaho Environmental Education Association. For more information, contact the IdEEA office.

## Rangeland Ecology Workshop *Plan now for 2004!*

This summer's Idaho Rangeland Resource Commission workshop called "Rangeland Ecology" was a huge success. The class was filled to capacity (with a waiting list for next summer). Teachers representing nearly every grade-level and discipline learned more about Idaho and the arid landscapes we call rangeland. Fun field trips, interesting speakers, hands-on activities, and a new way to look at the land (not to mention a phenomenal place to spend a week in the summer) highlighted the comments from participating teachers. Make plans early to attending this unique, outdoor workshop next summer in McCall at the University of Idaho Field Campus, July 12-16, 2004.



## Some October Happenings

- Energy Awareness Month ([www.plt.org/initiatives/energy.cfm](http://www.plt.org/initiatives/energy.cfm) for energy education materials)
- Oct. 4-10, World Space Week ([www.spaceweek.org](http://www.spaceweek.org))
- Oct. 7-11, "Thinking Globally While Acting Culturally" Anchorage, Alaska ([www.naaee.org](http://www.naaee.org))
- Oct. 10-12, Trailing of the Sheep—Ketchum to Hailey ([www.trailingofthesheep.com](http://www.trailingofthesheep.com))
- Oct. 12-18, Earth Science Week ([www.earthsciweek.org](http://www.earthsciweek.org))
- Oct. 18, World Water Monitoring Day ([www.worldwatermonitoringday.org/](http://www.worldwatermonitoringday.org/))
- Oct. 23-25, INEEL Science and Engineering Expo (see article page 5)
- Oct. 19-25, Forest Products Week ([www.idahoforests.org](http://www.idahoforests.org))

# OPPORTUNITIES, MATERIALS and RESOURCES



## Capitol Holiday Tree 2003—From Idaho's Heart to America's Home

### Make an Ornament.

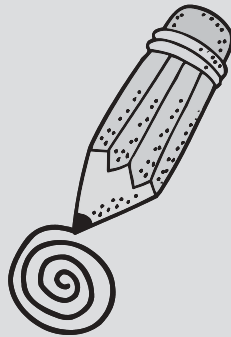
### Follow the Tree on its Journey!

This year Idaho is honored to provide the Holiday Tree for the nation's capitol. It's our first time ever. Many of you made ornaments last year for the first Pentagon Holiday Tree. Your creative skills are needed again for the Capitol Holiday Tree.

To learn more about the holiday tree, and get the ornament-making criteria, visit [www.capitolholidaytree2003.org](http://www.capitolholidaytree2003.org). **A drawing will be held to send two Idaho students to the tree lighting ceremony in Washington DC. Ornaments must be postmarked by Nov. 1, 2003.** There will also be a "tree diary" online, so students can follow the tree's trip throughout Idaho and across the country to the capitol.

## Forest Products Week, Oct. 19-25

Has a forest product touched your life today? The answer is definitely "YES!" Learn all about forest products at [www.idahoforests.org](http://www.idahoforests.org). You'll be amazed at all the ways trees are part of products you use every day. Contact the PLT office for a free classroom set of Idaho tree bookmarks.



## Forest Products Week Essay Contest.

Open to K-12 students in Idaho. Contact the PLT office for contest information and guidelines, or visit [www.idahoforests.org](http://www.idahoforests.org). Submissions must be postmarked by Oct. 29, 2003. Student winners receive a savings bond, and their class receives \$200. This is a great way to practice authentic writing!

## Wildlife Express

Are you looking for a great addition to your classroom? Subscribe to *Wildlife Express*! This newspaper features a different Idaho species each month and contains articles highlighting the natural history and management of the species. For less than 85 cents per student per year, your students can get their hands on a newspaper produced for *them* about animals in *their* state! The newspaper is geared for 4<sup>th</sup>–6<sup>th</sup> grade; however, many teachers in older and younger grades have found it beneficial. We all know kids love animals! Use it for reading comprehension and/or science. In addition to the newspaper, you will receive Educator's Express, a teacher's guide with activities geared to each issue. If two or more classrooms at your school subscribe, each classroom will also receive the award-winning *WILD about Mountain Lions*, a video produced by Idaho Dept of Fish and Game. Our first issue features the mountain lion, so you'll want to hurry to subscribe! The other issues will include little brown bat, mountain quail, woodland caribou, magpie, great horned owl, caddisfly, Idaho giant salamander, and steelhead. To subscribe to *Wildlife Express*, contact Kevin Frailey, Conservation Education Supervisor, Idaho Dept. of Fish and Game (208)287-2874 or you may download the subscription form at [www2.state.id.us/fishgame](http://www2.state.id.us/fishgame). Cost for a classroom subscription is \$30 per year. Don't forget to ask local businesses for sponsorship. They'll get a certificate for it.



# OPPORTUNITIES, MATERIALS and RESOURCES

## Free Classroom Materials from BLM

Ready for the new school year? If you are studying **geology, energy, fossils, or geography and mapping**, BLM has some tools for you.

Reprints from National Science Teachers magazines, *Science and Children* and *Science Scope*, are available to you for

- exploring caves of the United States,
- learning uses for Global Information Systems (GIS),
- understanding our nation's energy alternatives, and
- discovering the exciting secrets of paleontology.

Each reprint comes with a colorful classroom poster with activities and more information on the back.

Request yours today from BLM, attention Shelley Davis-Brunner, [shelley\\_davis-brunner@blm.gov](mailto:shelley_davis-brunner@blm.gov), or (208) 373-4020. Have a great school year!

## Winning Arbor Day Poster

Hannah Joy Coad of Cataldo was the 2003 Arbor Day Poster Contest winner—in both Idaho and the Nation! We've reprinted her beautiful poster for display in your classroom. Contact the PLT office for your free copy.

## 2004 Arbor Day Poster Contest

5<sup>th</sup> Graders—It's time to get started on your poster for the 2004 Arbor Day Poster Contest. The theme is "Trees are Terrific—In Cities and Towns," and posters are due Feb. 27, 2004. For a free poster contest packet with activities and poster guidelines, contact the Idaho Dept. of Lands at [deb39@aol.com](mailto:deb39@aol.com), or call 208-334-0200.

## New Tree Poster

"Blueprint of a Miracle" is a new poster from the Idaho Forest Products Commission. It's a two-sided poster with a western white pine on one side, and information about forests on the other. Contact the PLT office for your free copy.

## GreenWorks! Grants Due Now

National Project Learning Tree offers GreenWorks! grants for hands-on youth community action projects. Idaho awardees last year included Pocatello Community Charter School, Orofino High School and Ketchum's Environmental Resource Center. Applications are due Oct. 3. For information, visit [www.plt.org](http://www.plt.org) and follow links to GreenWorks!

## "Wildland Fire"

### *Natural Inquirer* Available

The U.S. Forest Service produces the *Natural Inquirer*, a journal for middle school students. Articles share information about research conducted by USFS scientists. We've got copies of the Wildland Fire *Natural Inquirer*. Contact the PLT office to order yours today. Or visit [www.naturalinquirer.usda.gov](http://www.naturalinquirer.usda.gov) to download a copy, and to learn about other *Natural Inquirer* issues. While at the website, visit the Kids' Corner and Teacher's Place.

## Interactive Forest Website

Take a trip to Idaho's Floodwood State Forest at [www.floodwoodforest.net](http://www.floodwoodforest.net). Explore the forest's history, view 360° panoramas, and learn about forest management from foresters Marianne and Tiny. Coming soon: A CD version of the website.



Don't miss the INEEL Science and Engineering Expo in Idaho Falls, Oct. 23-25. Students will explore robotics,

energy, chemistry, medical technology, environmental education, animals, insects, and more. Former astronaut Dr. Millie Hughes-Fulford kicks off the event. Also: teacher workshops, NASA career information, and standards-based activities. For more information, contact Jan Hill-Hancock at 208-526-0318, [hillje@inel.gov](mailto:hillje@inel.gov), or visit <http://education.inel.gov/precollege/sci-expo.asp>

## Free to 4<sup>th</sup> Grade Classrooms: *Rangeland~Idaho's Roots*

This full color, eight page booklet is full of valuable information about the history of Idaho. From Woolly Mammoths and Saber Tooth Cats to land settlement in Idaho, your students will learn about the changes which have taken place in Idaho on the rangeland. A vocabulary section, fully illustrated backdrop, and a separate teacher guide with teacher-written classroom activities correlated to Idaho Achievement Standards are included. It is not necessary for the instructor to have a background or in-depth knowledge about Idaho's rangeland to use these materials. Packets will include 30 booklets, teacher guide (with lesson plans and worksheets), and other resource materials to make this integrated material very user-friendly. Contact the Idaho Rangeland Resource Commission today for your packet to be mailed to your school. Include your name, school, address and number of packets requested.

[www.idahorange.org](http://www.idahorange.org)

Visit the Idaho Rangeland Resource Commission on the web to find new teacher resources and activities for your classroom. A downloadable activity book was developed this past summer with activities and lesson plans written by teachers for teachers. Subjects include science, math, language arts, and social studies. Materials for the activities are also available from the IRRC upon request.



*Spraying moose droppings to make earrings.*

### *Teachers at advanced Project WILD workshops*

*Working with swan eggs.*



## Filling the GAP—Groundwater Awareness Project

We all know how central water is to our daily lives, but most of us don't really know very much about this critical resource. For example, did you know that Idaho's Snake River Aquifer is the second largest continuous aquifer in the United States - second only to the Everglades? Did you know that per capita Idahoans use more groundwater than any other state in the union? Where does your drinking water come from and who is responsible for its management? Information and material relating specifically to groundwater can sometimes be hard to find, or so technical that it is meaningless. The Groundwater Awareness Project's mission is to fill that information gap and provide accurate, readable information to the public and schools alike that will ultimately enable citizens to become involved in the decision-making processes related to water management.

The Idaho Water Resources Research Institute (IWRRI), at the University of Idaho, has been working with the Idaho National Engineering and Environmental Lab (INEEL) to develop a comprehensive groundwater outreach program. Joining in this statewide effort are other partnering agencies and organizations, including professional representatives from the Department of Water Resources, Bureau of Reclamation, Bureau of Land Management, U.S. Geologic Survey, the Idaho Water Policy Group, as well as educators from the Idaho State Dept. of Education, the University of Idaho, Boise State University and Bonneville School District.

Currently it is a challenge for already busy teachers to find an assembled body of education materials relating to groundwater. Therefore, a significant component of the GAP effort will be directed at the development and distribution of that type of material through a project called the Aquifer Academy. Teachers have indicated a need for groundwater-specific curricular material, supporting instructional models and an interactive web-site featuring technological applications and current trends in water science. Based on teacher's feedback, one of the initial efforts will be to involve a team of middle and high school teachers in a curriculum writing workshop late this fall.

### **Help Develop This Curriculum**

This development workshop will be accredited and the curriculum will be formulated around Idaho Achievement Standards.

*If you are interested in participating, contact Julie Scanlin at the Project WET office.*

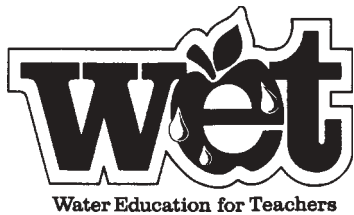
# Project WILD Fall Activity



Kick off a new school year with a teaching unit written by advanced WILD student, Sheryce Davis. The unit's focus is survival and adaptation. Sheryce tied animal adaptations for survival to surviving in a middle school environment. The unit could easily be "adapted" for older or younger grades. You can find the unit at <http://www2.state.id.us/fishgame/Go to Information, then Education, then Project WILD>.

## Readers' Corner

- Potter, Jean. Nature in a Nutshell for Kids. *Over 100 Activities You Can Do In 10 Minutes or Less*. John Wiley & Sons, Inc. 1995. (Teacher's Resource)
- Albert, Toni. A Kid's Fall Ecojournal. Trickle Creek Books. Sept. 1997. (Ages 9 –12)
- Greenwillow, Henry Cole. I Took a Walk. Greenwillow Books. 1998. (Ages 5 – 8)
- Hooper, Meredith, The Drop in My Drink. *The Story of Water on Our Planet*. Viking Children's Books. 1998. (Ages 9 –12)

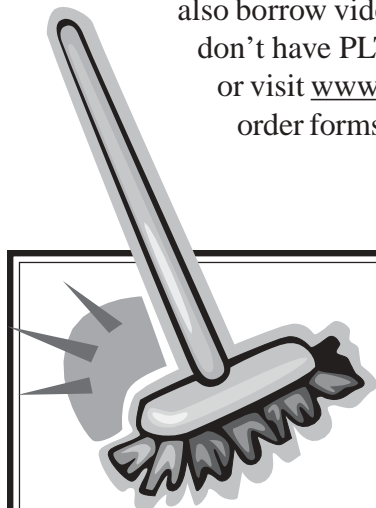


## Fall WET Activity

AAAAACHOOOOOOO..... "No Bellyachers" is a great introduction to communicable diseases, and how they are spread. A fun tag game illustrates how the development of specific good health practices can help protect us from being caught by one of those nasty cold or flu bugs. This activity can easily fit into health, social studies or science units.

## Fire Up With PLT This Fall

Fire is a stimulating current event. Numerous fires were active in Idaho when *EarthTracks* went to print. Project Learning Tree has fire-related activities in both the PreK-8 Activity Guide and the High School Forest Ecology module. You can also borrow videos/CD's about fire from our lending library. You don't have PLT yet? Come to a workshop! Contact the PLT office or visit [www.idahoforests.org](http://www.idahoforests.org) for more information and on-line order forms.



## Mailing List Clean-up

We're cleaning up our *EarthTracks* mailing list. In the Spring 2003 issue, we asked readers to respond if they'd like to continue getting the newsletter. Our list has slimmed down considerably! If you know of someone who wants to receive *EarthTracks*, have them contact us. We'd be happy to include them.



For more information on Earthtracks, contact:

Idaho Dept. of Fish and Game  
**Project WILD**  
PO Box 25, Boise ID 83707  
800-422-WILD [www2.state.id.us/fishgame](http://www2.state.id.us/fishgame)  
Lori Adams (208) 287-2889  
[ladams@idfg.state.id.us](mailto:ladams@idfg.state.id.us)

**U.S. Bureau of Land Management**  
Environmental Education  
1387 S. Vinnell Way, Boise ID 83709  
Shelley Davis-Brunner (208) 373-4020  
[shelley\\_davis-brunner@blm.gov](mailto:shelley_davis-brunner@blm.gov)

Idaho Forest Products Commission  
**Project Learning Tree**  
350 N. 9<sup>th</sup> St., #304, Boise ID 83702  
800-ID-WOODS [www.idahoforests.org](http://www.idahoforests.org)  
Michelle Youngquist (208) 334-4061  
[plt@idahoforests.org](mailto:plt@idahoforests.org)

**Project WET**  
800 Park Blvd., Plaza 4, #105, Boise ID 83712  
Julie Scanlin (208) 422-0737  
[http://boise.uidaho.edu/iwrri/education\\_projects.htm](http://boise.uidaho.edu/iwrri/education_projects.htm)  
[jscanlin@uidaho.edu](mailto:jscanlin@uidaho.edu)

**Idaho Rangeland Resource Commission**  
PO Box 126, Emmett ID 83617  
877-ID-RANGE [www.idrange.org](http://www.idrange.org)  
Gretchen Hyde (208) 398-7002  
[irrc@bigskytel.com](mailto:irrc@bigskytel.com)

**Idaho Environmental Education Assn.**  
2211 S. 2nd Ave., Pocatello, ID 83201  
Donny Roush, 208-232-5674 [www.idahoe.org](http://www.idahoe.org)  
[donny@idahoe.org](mailto:donny@idahoe.org)

*EarthTracks* can be accessed at <http://www.idahoforests.org/teach1.htm>

*Layout provided by Alyssa Faaborg, Idaho Fish and Game*

ADDRESS SERVICE REQUESTED

PRSRRT STD  
U.S. POSTAGE  
**PAID**  
BOISE, ID 83702  
PERMIT #1

Project Learning Tree/I/FPC  
350 North 9th Street #304  
Boise, ID 83702

