

# Lodgepole Pine

Pinus contorta

## SIZE AT

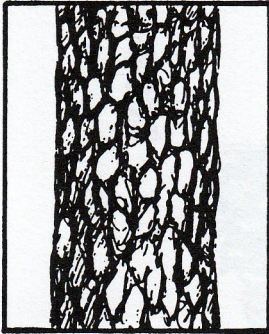
AGE 100: 70-110 feet tall  
1-2 feet in diameter

LIFE SPAN: 150 years

NEEDLES: 1-3" long. In bundles of 2.

CONES: ¾-2" long. Eggshaped with small prickle on each scale.

BARK: Black to reddish-brown. Thin and scaly.



## WHERE TO FIND:

Middle elevations on well drained soils, often in pure stands.

## THINGS TO KNOW:

The lodgepole pine occurs in areas where forest fires are common. The cones will stay on the trees tightly closed until the heat of a fire causes the cones to open and drop seed to begin a new forest. Native populations prized the lodgepole for making teepee supports and travois poles.