

THE LOG

A FOREST EDUCATION UPDATE

Fall 2001

Idaho Forest Products Commission
350 N. 9th, Suite 304
Boise, Idaho 83702
Phone: 208-334-4061
Messages: 800-ID-WOODS
Fax: 208-334-3449
NEW! plt@idahoforests.org
www.idahoforests.org

NATIONAL FOREST PRODUCTS WEEK

October 14-20, 2001

Forests provide us with countless benefits every day. In turn, people must be good stewards of these ecosystems and their inhabitants. We have ideas, materials and opportunities, to help you and your students observe this week and celebrate forests all year long. Also, visit our web-site at www.idahoforests.org for all your forest information needs.



Contact us for your **free Forest Products Week packet** containing information, activities and a classroom set of tree bookmarks for your students. *Indicate grade level and # of students.*

6th Annual Essay Contest

Your students can practice authentic writing and learn about forests at the same time. Join the educational fun! See the enclosed flyer or visit our website for contest information. Prizes include savings bonds for the winning students, and cash for their classroom.

PROJECT LEARNING TREE



Through Project Learning Tree, you receive engaging activities that teach about trees, forests and the environment while helping you meet Idaho's academic standards. (Workshops are preK-12 unless noted, and are offered for one graduate level credit.)

2001-2002 Workshop Schedule

Contact us for the most current schedule or to arrange a workshop in your community.



- Oct. 19-20, Boise
- Oct. 19-20, Lewiston (secondary level)
- Nov. 2-3, Boise
- Nov. 9-10, Post Falls
- Nov. 16-17, Pocatello
- Nov. 30-Dec.1, Rexburg
- Feb. 22-23, Boise
- Spring, Moscow (secondary level)
- April 19-20, Boise
- May 10-11, Post Falls

PLT and BLM are all fired up!

Project Learning Tree and the Bureau of Land Management have joined forces to provide fire-related materials and information at PLT workshops, including the "Burning Issues" interactive CD (a \$25 value). *Come to a PLT workshop and catch the spark!*



Apply now for GreenWorks! Grants

Funding from the BLM allows PLT to give grants of \$500 to \$2000 for **wildfire management** and **invasive species** service projects. Teachers must be PLT trained, and projects should be school or community based with local partners and hands-on participation by youth. Grant guidelines are available at www.plt.org. (Go to **PLT in Action**.) Note: The deadline for fire and weed-related grants is extended, but we encourage you to apply now.

EPA Grant Received for Standards Project

Project's Learning Tree, WILD and WET are working to develop correlations between our materials and Idaho's academic achievement standards. Look for a finished product by next school year.



ARBOR DAY



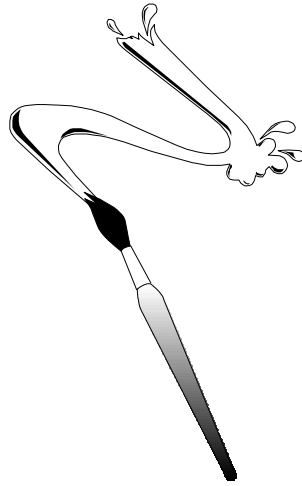
New poster available

Idaho's Arbor Day 2000 poster contest winner was **Barbara Sorenson's student Stacy Tarbet of Big Valley Elementary in Rupert**. Stacy's poster has been reprinted, and is available for display in your classroom. *Contact us for your free copy.*

Arbor Day Poster Contest

---Attention 5th Grade Classrooms!

Arbor Day is the last Friday in April, but fall is a great time to create and submit your posters. The 2002 theme is *Trees are Terrific...Inside and Out*. For contest information and your free contest packet (with activities and guidelines), contact the Idaho Dept. of Lands at 208-334-0200, smoore@idl.state.id.us. Contest deadline: February 28, 2002. Prizes include savings bonds and trees for Arbor Day.



Idaho's Arbor Day is April 26, 2002.

New video about careers

"The Right Choice" highlights careers of the modern forest products industry. Many talented people are needed to help meet the needs of people around the world while taking care of forest ecosystems. Foresters, aquatic and wildlife biologists, chemists, engineers, machinists, marketing and computer specialists are just some of the many career options. Aimed at junior high. 15 min. *Contact us to borrow this video.*



"Energy & Me" Music CD

Popular educational entertainer Billy B has teamed up with Project Learning Tree to provide a high-energy creative music sensation. The 15 songs were created and written by Billy B using PLT activities. All the songs on the CD can be easily integrated into your teaching and offer a musical way to enrich student learning. *Contact us to borrow this CD.*

Educational Lending Kits

Contact us to borrow a Paper Making Kit or Forester Kit (contains tools used by professional foresters). These kits come loaded with supplies and background materials. You get to keep them three weeks, and the only cost to you is return shipping.



TEACHERS RECEIVE GRANTS

The Idaho Forest Products Commission awarded sixteen Idaho educators with grants to support forest-related projects this school year. Congrats to:

- P **Susan Borowicz**, Elk City School
- P **Gina Bush**, Maple Grove Elem., Boise
- P **Jean Garner**, Hibbard Elem., Rexburg
- P **Kris Dietz**, Mullan Trail Elem., Post Falls
- P **Ann Gehring**, Sandpoint H.S.
- P **Rea Ann Loomis & Mike Nelson**, Elk City School
- P **Lisa Love**, Richfield School
- P **Sally Loveless & Ely Darling**, Washington Elem., Sandpoint
- P **Tracy Mosgrove**, Skyway Elem., Coeur d'Alene
- P **Faye Price**, Stalker Elem., Blackfoot
- P **Annette Shaw**, Deary School
- P **Jane Thornes**, Heyburn Elem., St. Maries
- P **Ellen Wells**, Ramsey Elem., Coeur d'Alene
- P **Carl White**, Whitman Elem., Lewiston

Grant applications are accepted year-round. Apply now and you may have a nice surprise next school year!

