

Moscow City Market

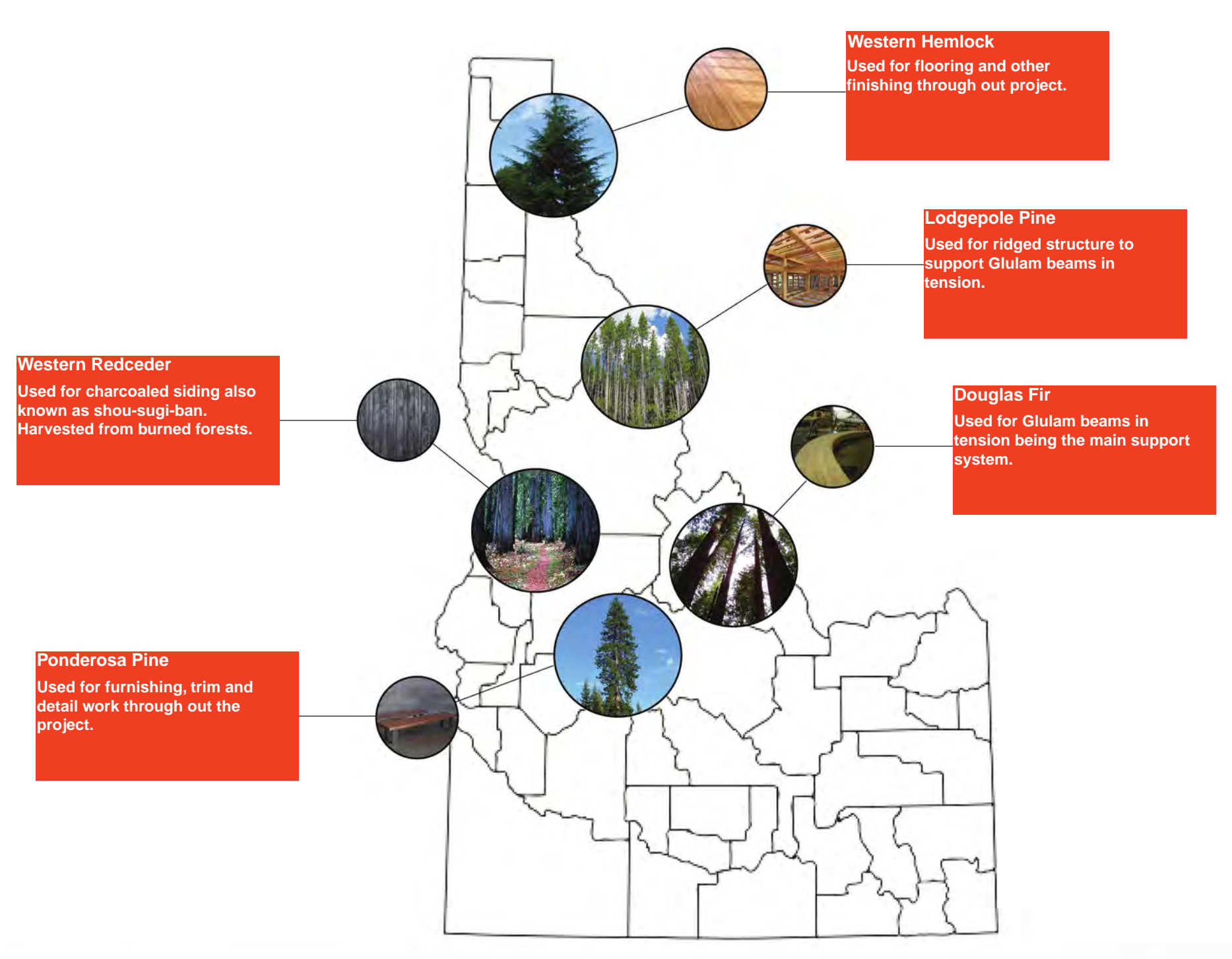


Eastern Facade

A market is a place to gather, to meet one another, to shop and to hold events. Keeping these key factors in mind, an indoor city market needs to be adaptable. Not only to the vendors and the individual users of its day to day market functions but to the community as a whole. As it will stand as a public building for the most of its life span it should be able to conform and adapt to the needs presented by the community, by utilizing a glulam system in tension we are able to cover a great distance in a dynamic form leaving way to the up most freedom and flexibility for the program within, whether for the daily market or community events in the evenings.

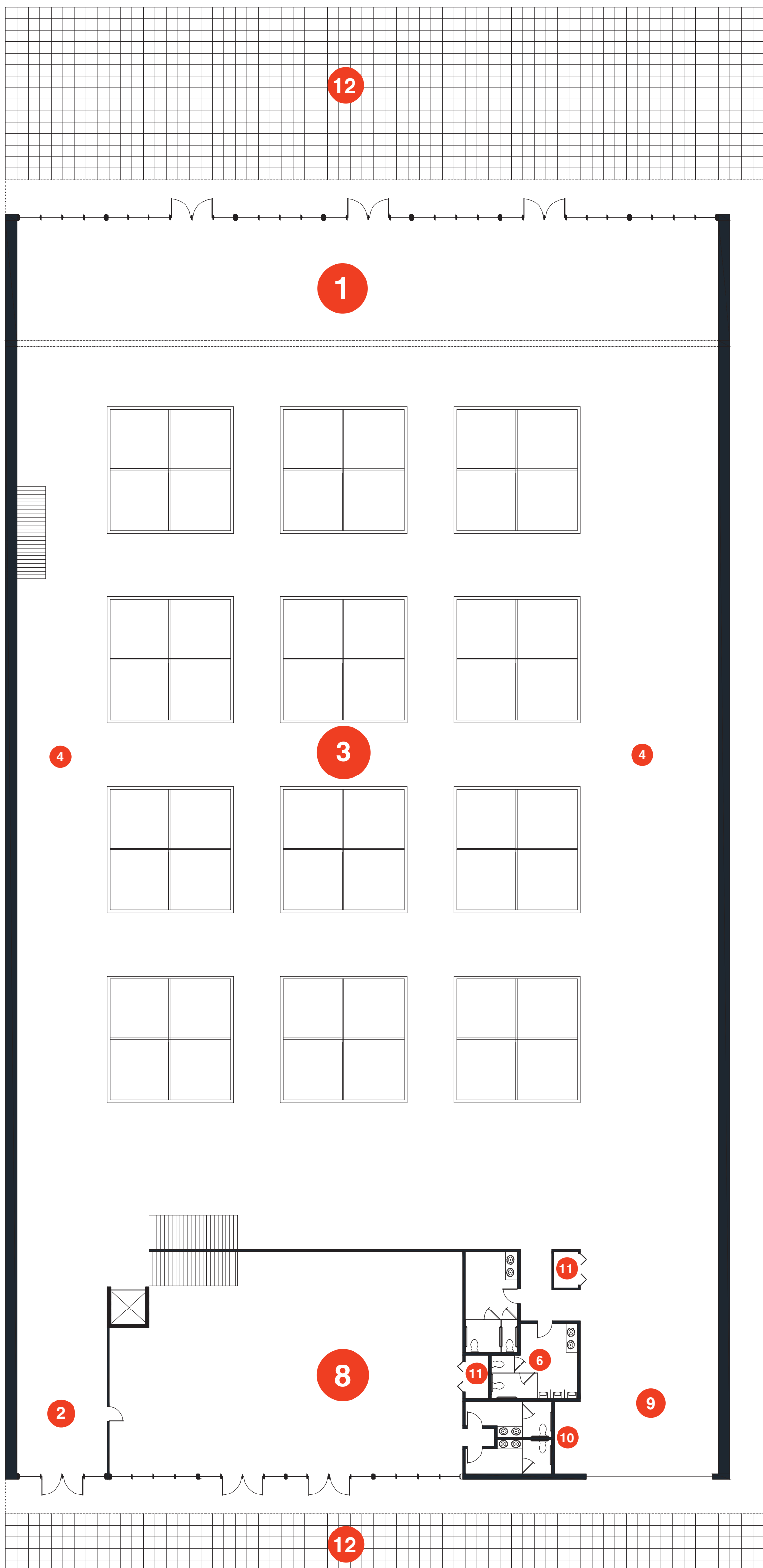


Entry/Gallery

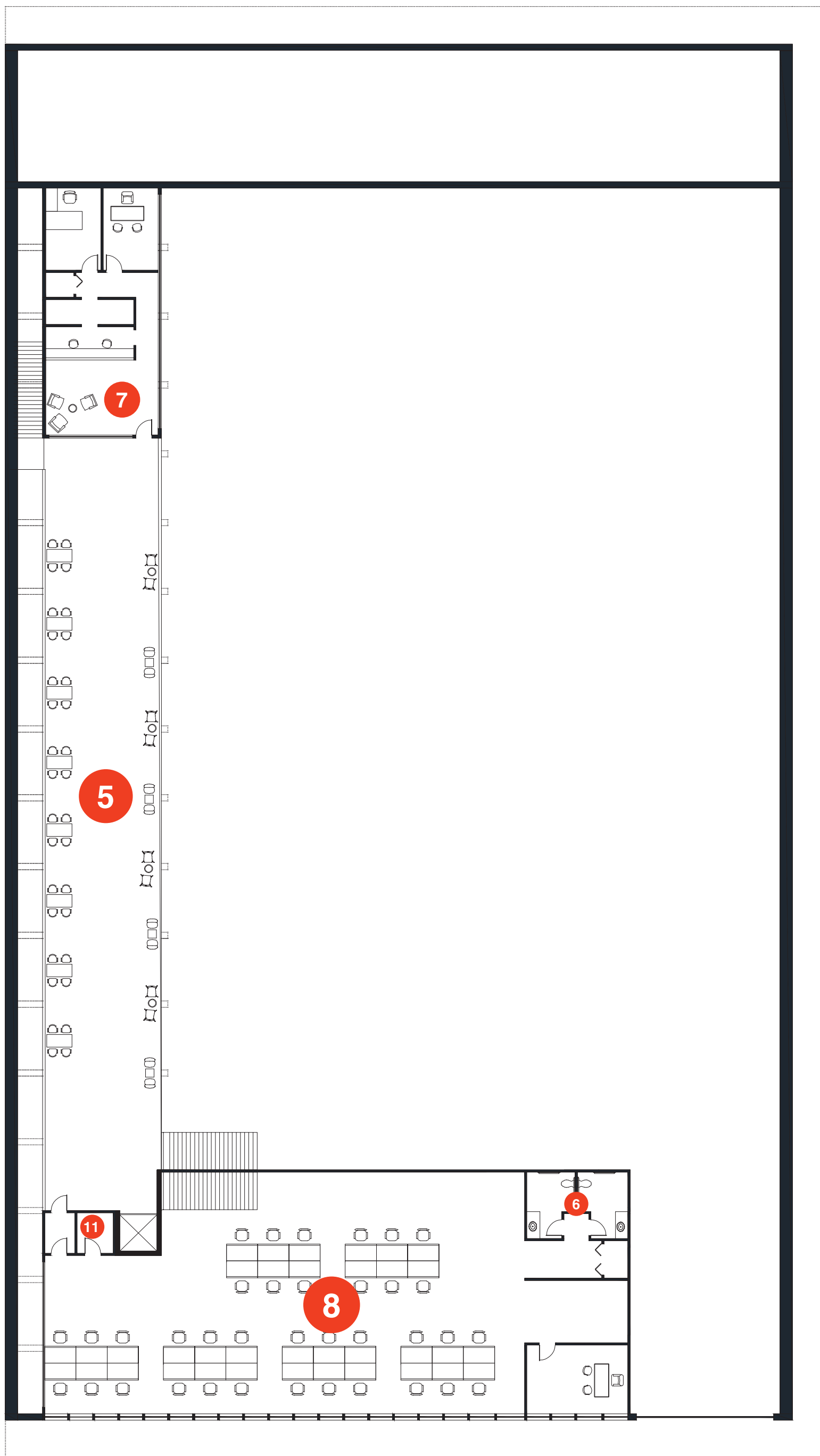


Building Program

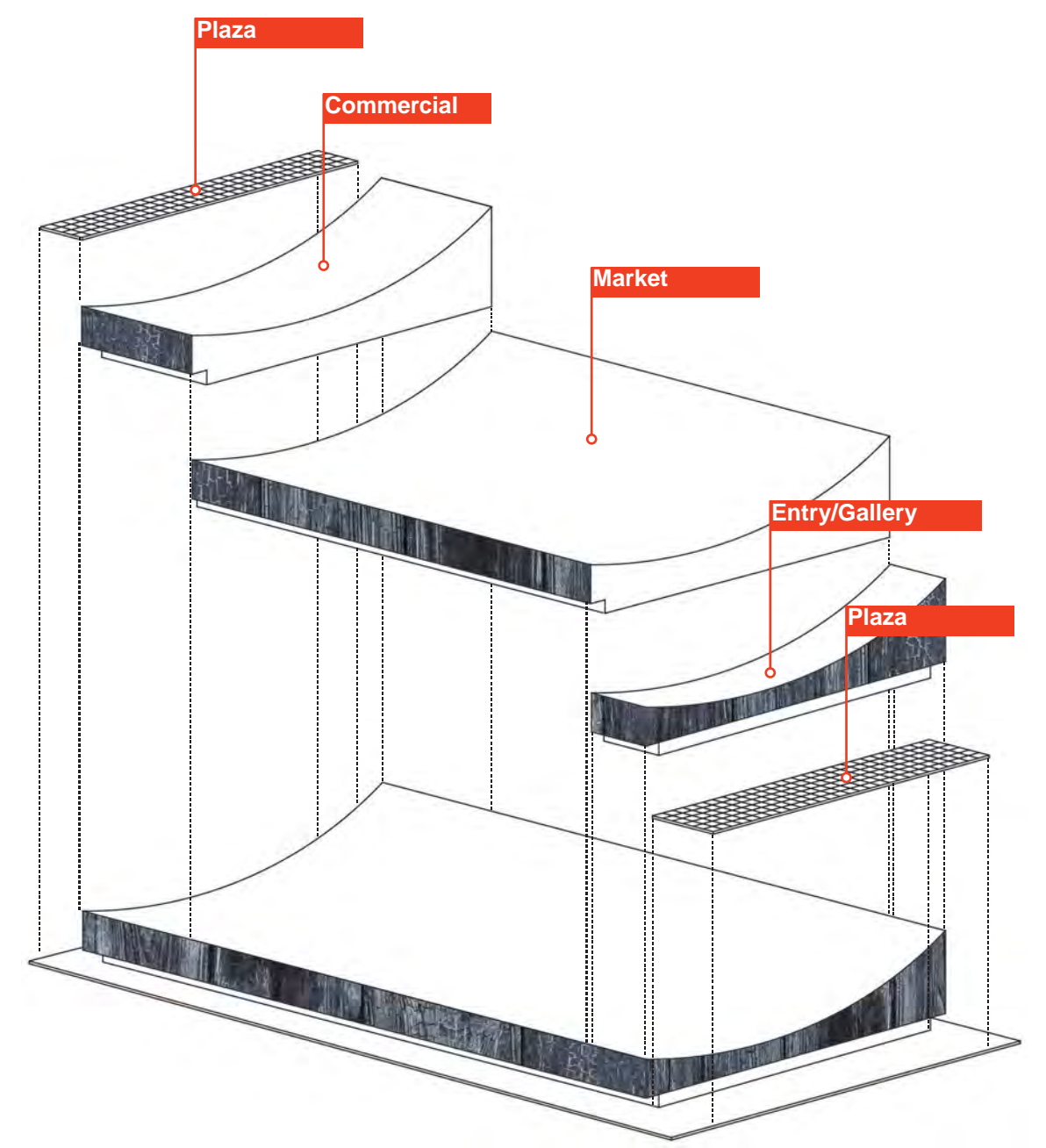
1	ENTRY/GALLERY	5	EATING AREA	9	UNLOADING
2	SECONDARY ENTRY	6	RESTROOMS	10	GARBAGE/FACILITIES
3	STALL AREA	7	ADMINISTRATION	11	MAINTENANCE/STORAGE
4	ADDITIONAL STALL AREA	8	COMMERCIAL	12	OUT DOOR PLAZA



First Floor
1/16" = 1'



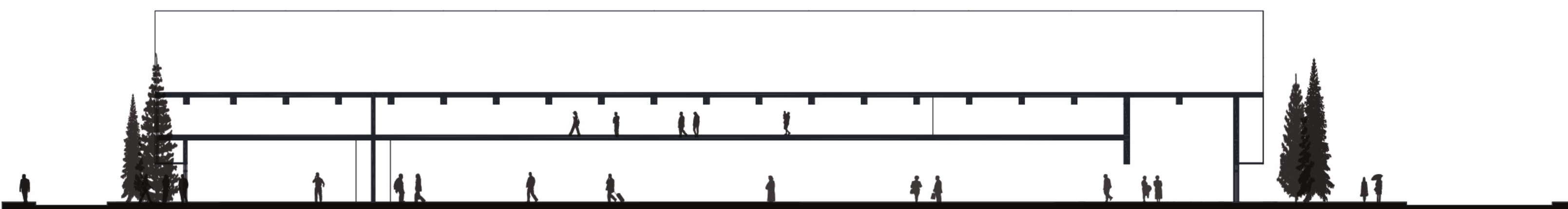
Second Floor
1/16" = 1'



East Elevation
1/16" = 1'



West Elevation
1/16" = 1'



North Section
1/16" = 1'



Entry/Gallery Roof Structure

- 1 GLULAM BEAMS
- 2 CONNECTION
- 3

