

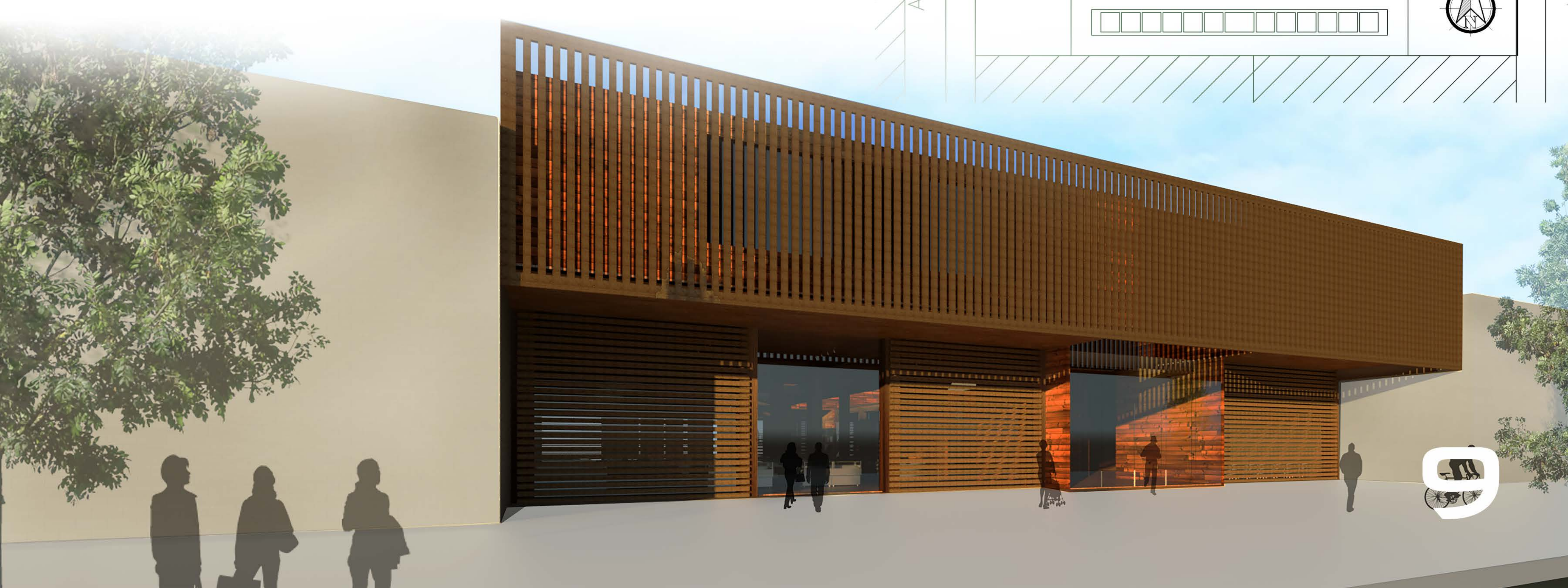
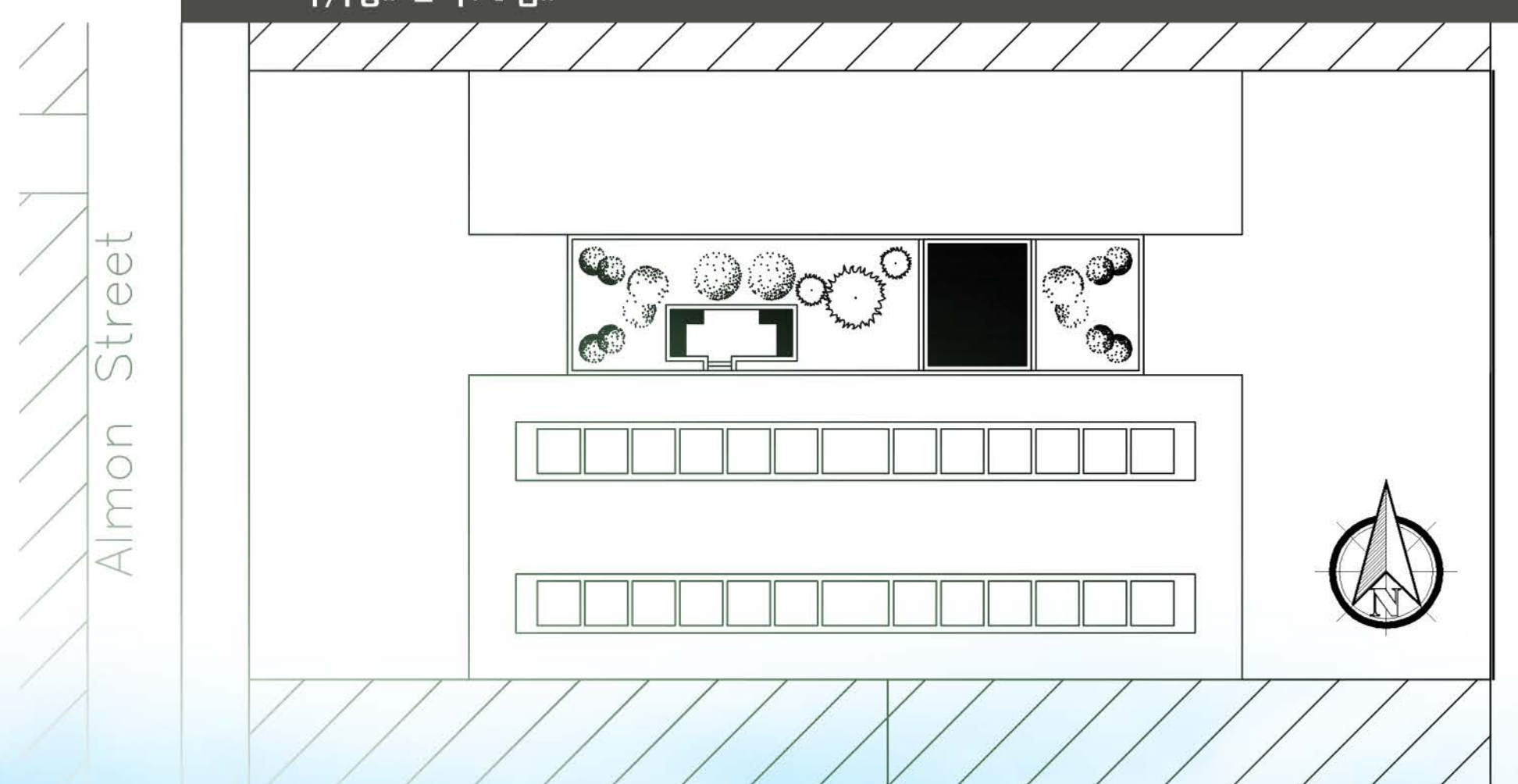
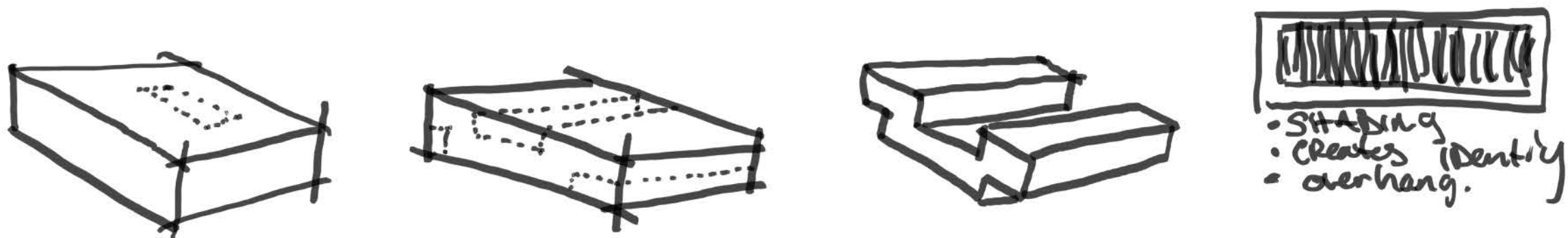


# MOSCOW MARKET

THE IDEA BEHIND THIS DESIGN IS TO INCORPORATE NATURE WITHIN AN URBAN CITY. IN ORDER TO ACHIEVE THIS IDEA THE DESIGN OFFERS A VARIETY OF WAYS TO DO SO. FROM THE OUTSIDE IN THE FACADE TO THE MARKET ALLOWS A CLEAR VIEW THROUGH OUT THE MARKET BY REMOVING THE SCREENS. ALSO THE GLASS IS ABLE TO BE REMOVED DURING SUMMER TO ALLOW A MORE FLUID AND NATURAL FLOW WITHIN THE MARKET. THE MARKET'S SPACE ALSO HAS AN ARBORETUM THAT CAN BE ACCESSED BY THE MARKET USES AND THE RESTAURANT USERS. ALSO FRAMES THE UNIQUE VIEWS OF THE CHANGING SEASONS



## DESIGN PROCESS

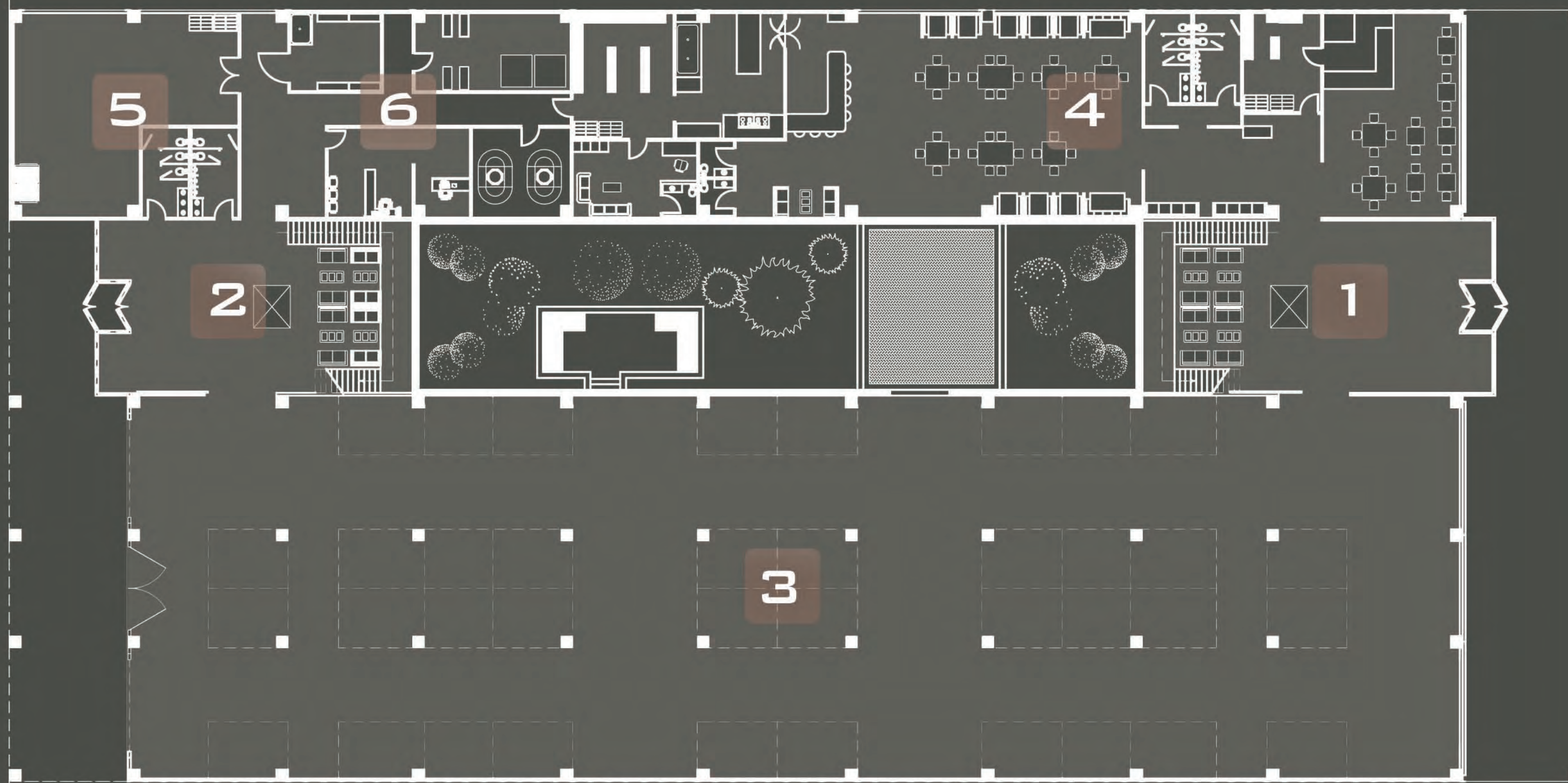




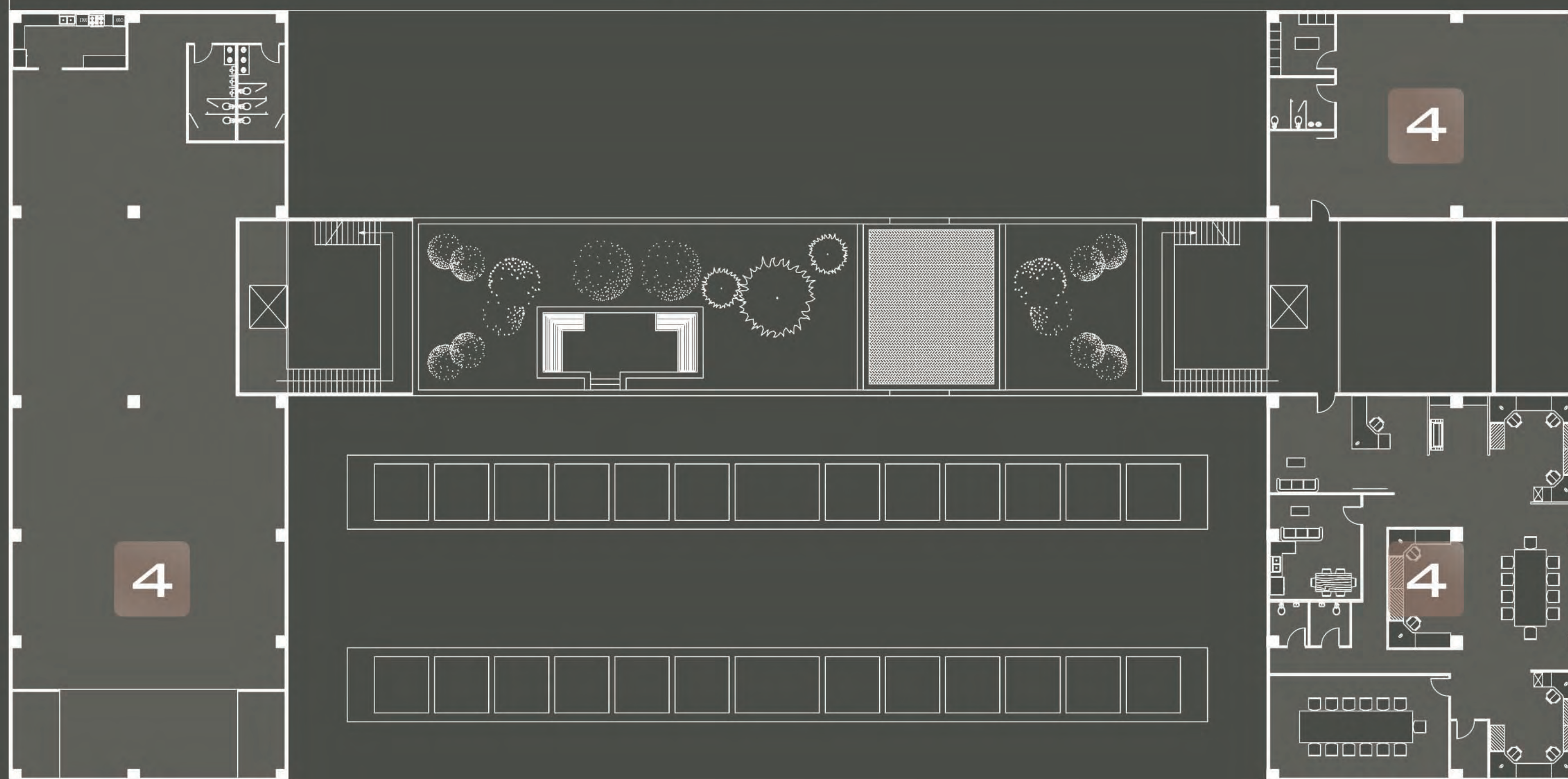
MOSCOW MARKET



LONGITUDINAL SECTION  
1/16" = 1' - 0"



1ST FLOOR  
1/16" = 1' - 0"



2ND FLOOR  
1/16" = 1' - 0"

PROGRAM

- 1 MAIN ENTRANCE
- 2 SECONDARY ENTRANCE
- 3 MARKET
- 4 COMMERCIAL
- 5 LOADING AND UNLOADING
- 6 MECH/MISC.

MATERIALS



