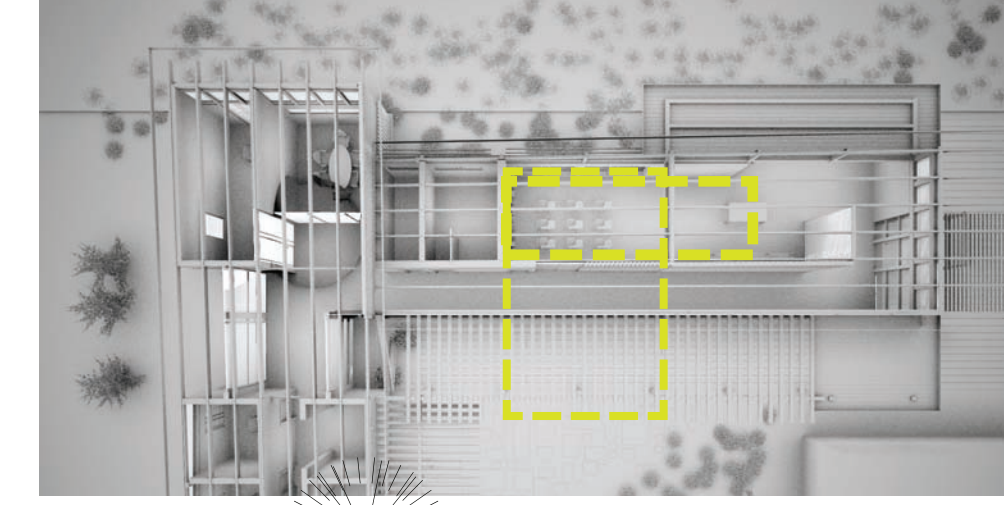


PITKIN NURSERY

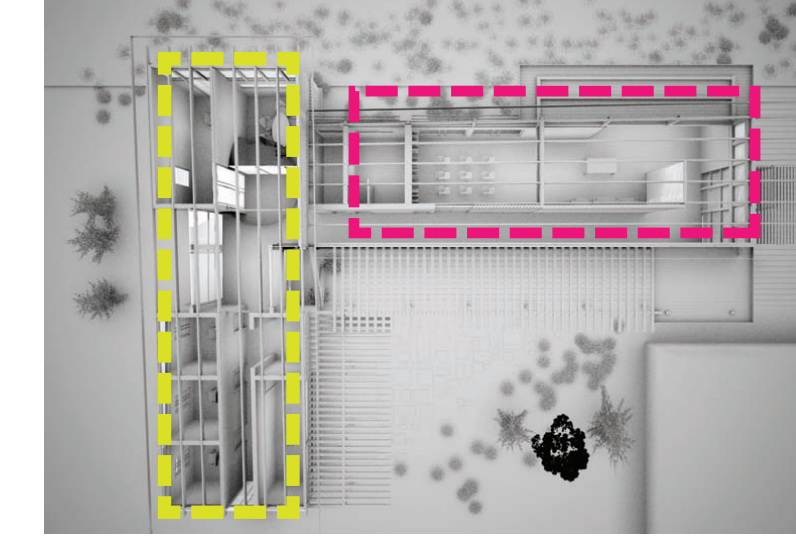
sustainable | transparency

Learning and Research center
Moscow, Id

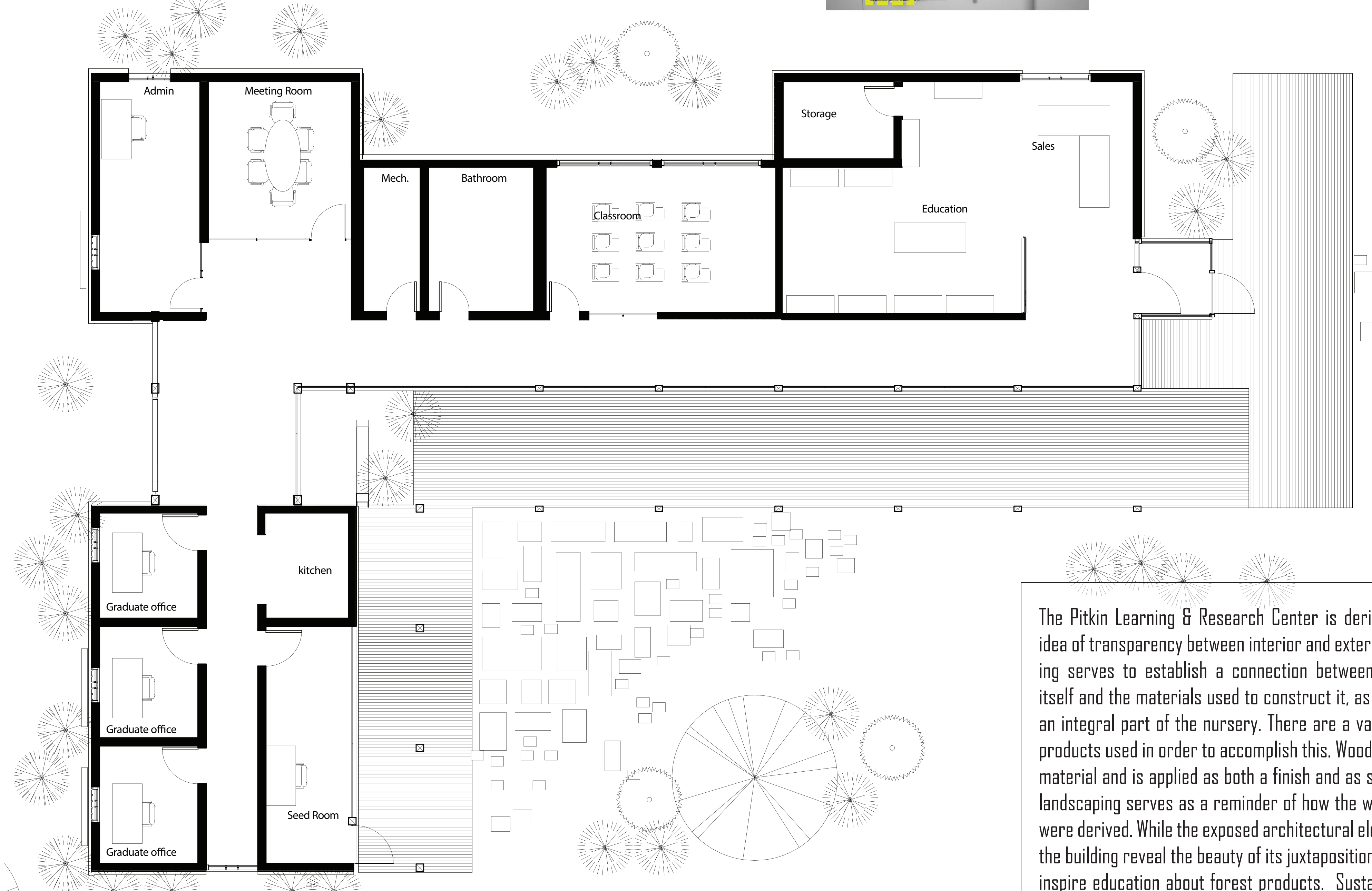
site plan 1"=60'



space flexibility
warm and cold



program
public
private



floor plan
3/16"=1'

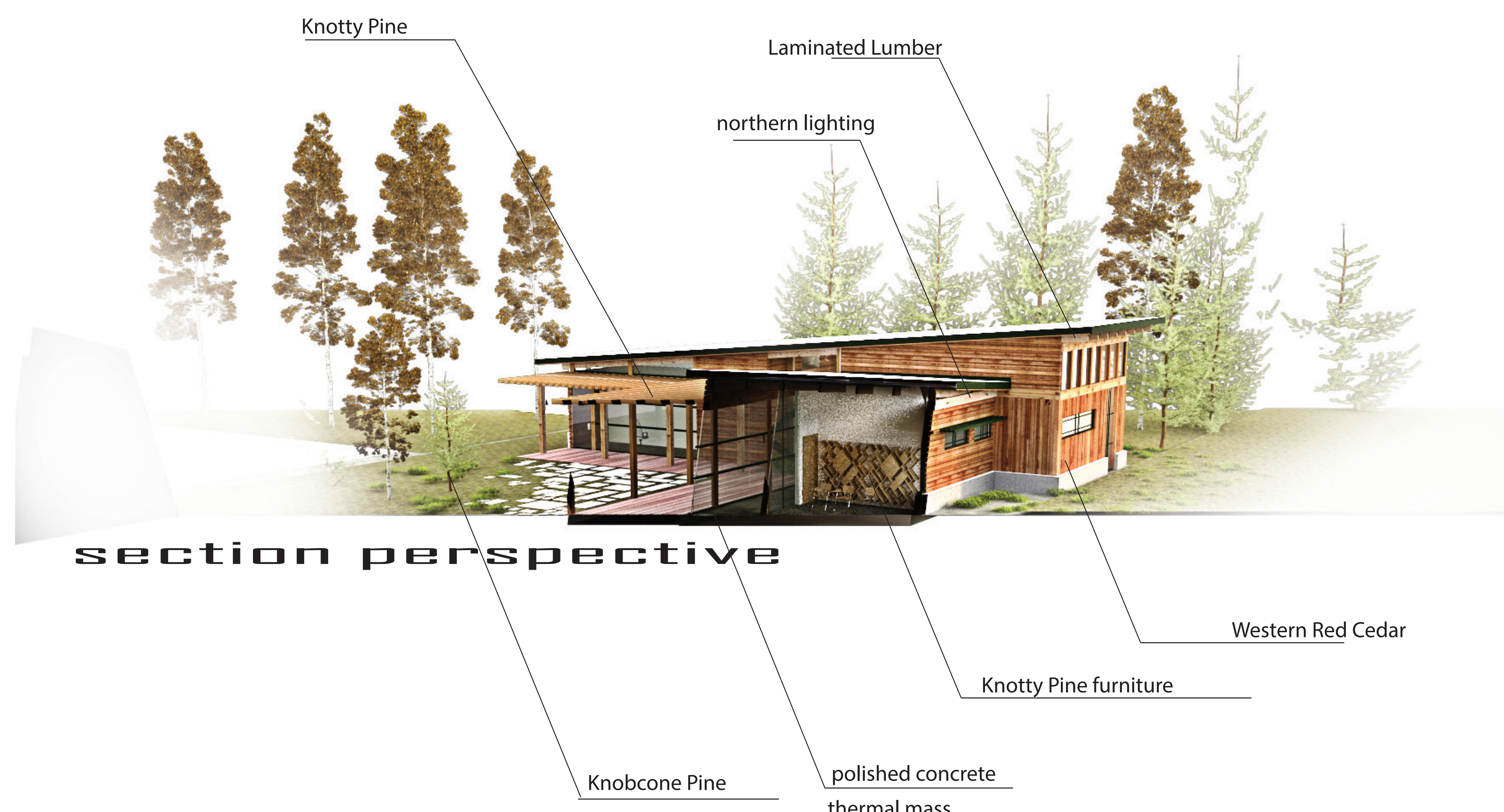
The Pitkin Learning & Research Center is derived from the idea of transparency between interior and exterior. The building serves to establish a connection between the building itself and the materials used to construct it, as well as being an integral part of the nursery. There are a variety of wood products used in order to accomplish this. Wood is a versatile material and is applied as both a finish and as structure. The landscaping serves as a reminder of how the wood products were derived. While the exposed architectural elements within the building reveal the beauty of its juxtaposition and serve to inspire education about forest products. Sustainability wise PL&RC collects water through the roofs which is utilized by the Nursery. The building fosters a connection with nature that is seemingly underutilized.



entrance



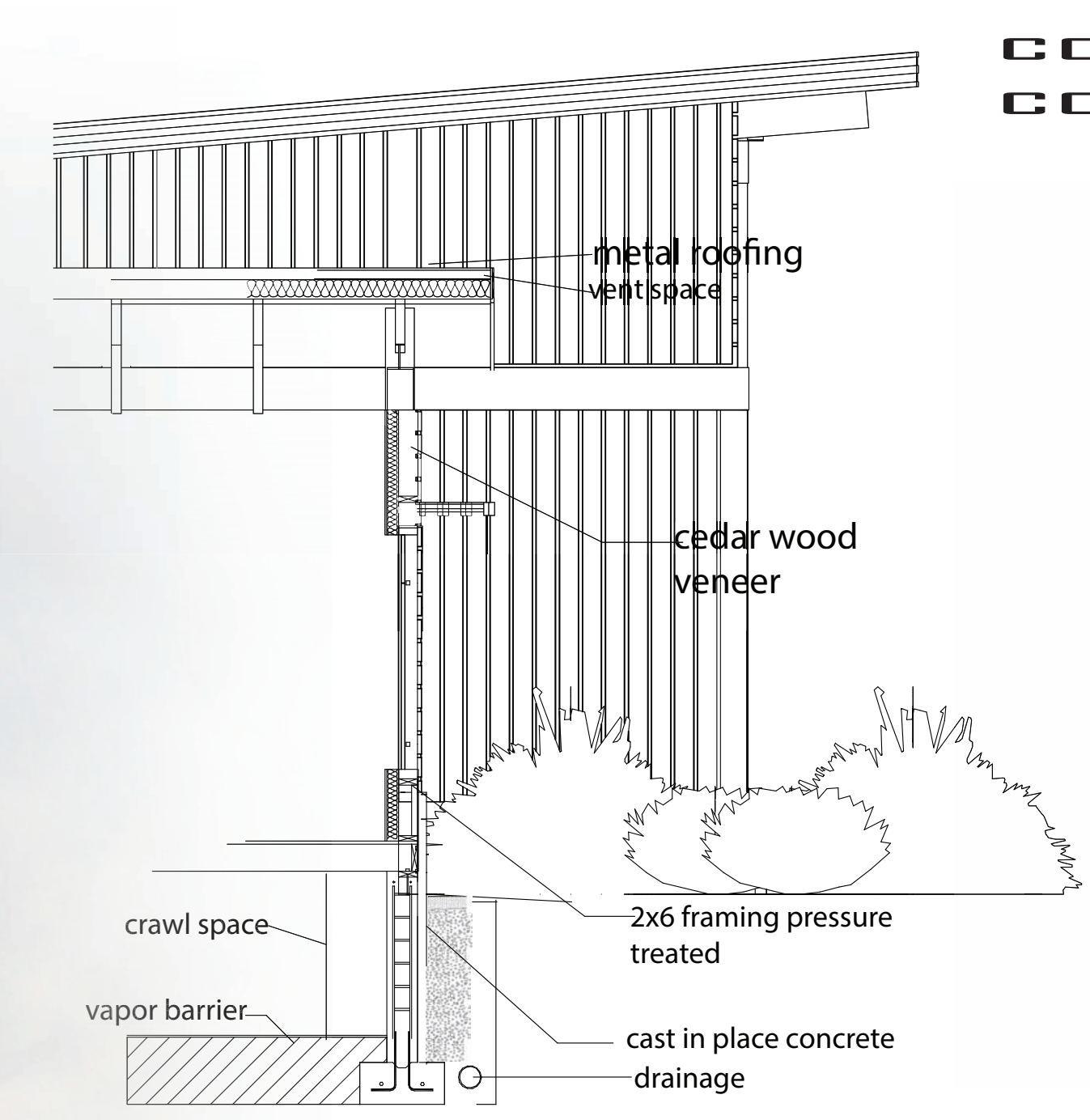
interior open partition wall



section perspective



beam to beam connection



column to beam connection



floor to roof detail 1/4"=1'



water collector