

Pitkin Nursery Learning Facility

Center for Forest Nursery and Seedling Research



Glimpses of Light and Space within an Idaho Forest

With inspiration from the forest and its play with light, the Design for the Pitkin Nursery Research Center evolved to expand on the concept of lighting while providing the user with glimpses of activity while experiencing the space.



CLASSROOM FACADE EXTENDING TO THE SOUTH

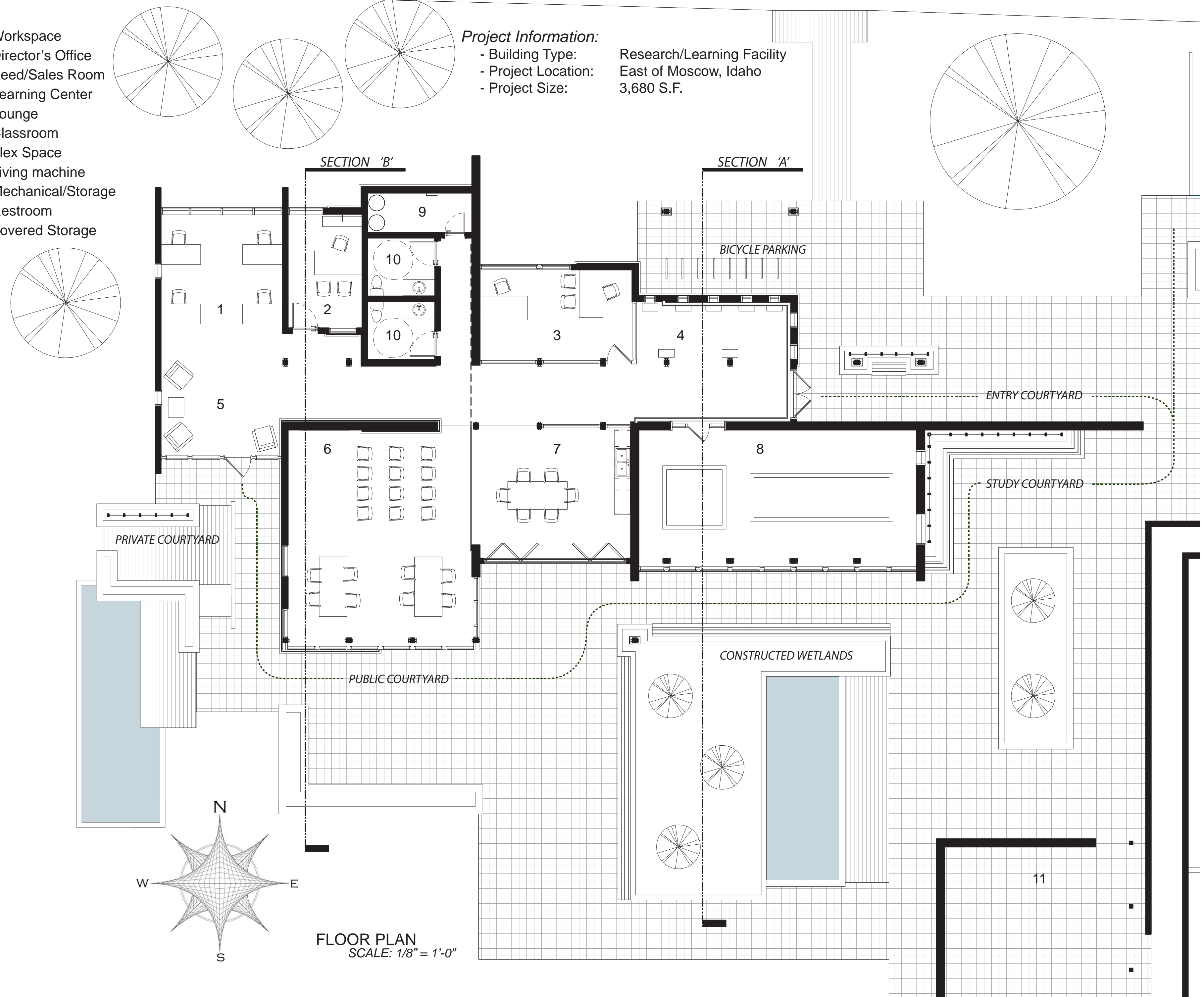


ENTRANCE INTO THE NURSERY LEARNING CENTER



GLIMPSES OF SPACE AND ACTIVITY UPON ENTRANCE

- 1 Workspace
- 2 Director's Office
- 3 Seed/Sales Room
- 4 Learning Center
- 5 Lounge
- 6 Classroom
- 7 Flex Space
- 8 Living machine
- 9 Mechanical/Storage
- 10 Restroom
- 11 Covered Storage



Project Information:

- Building Type: Research/Learning Facility
- Project Location: East of Moscow, Idaho
- Project Size: 3,680 S.F.

Highlight Idaho Forest Products:

- Contrasting the natural warmth and variety of wood against the solid, cool nature of concrete
- Uses for Idaho forest products range from structure, finish material, decking, furniture, and louvre systems

Spatial Relationships:

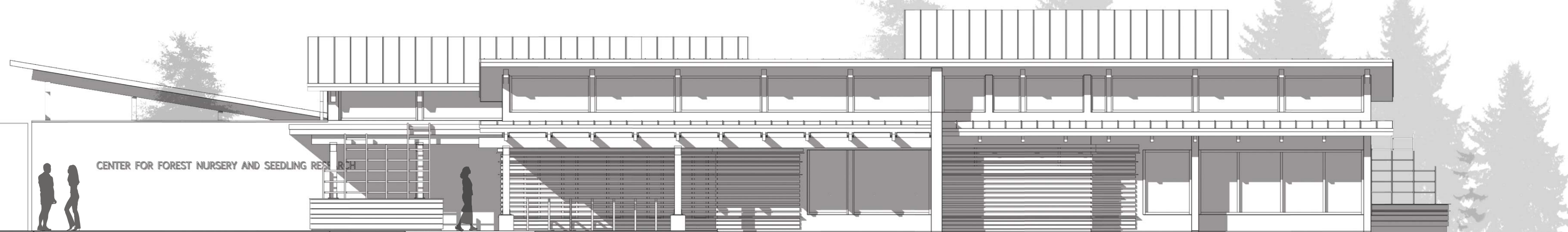
- Upon entering, the user is presented with views of activity and spaces within the building before reaching their destination
- The entry consists of a learning center and access to the central corridor leading to Living Machine, Flex Space and Classroom on the south, along with Seed/Sales room and services on the North. The end of the corridor opens up to an open work environment.

Outdoor Space:

- Four courtyards encompass the building creating a flow of space outside which relates to activity and space inside.
- Gardens, water pools, and planters with built in benches create inviting space to become engaged with the outdoor environment

Sustainability:

- An on-going effort to reduce energy consumption of buildings by promoting passive strategies for design
- Strategies include natural day lighting, storm water management, Wastewater management, solar energy, and natural ventilation.
- Utilizing renewable Idaho Forest Products has become one of the largest sustainable strategies incorporated into the new Pitkin Nursery Learning Facility.

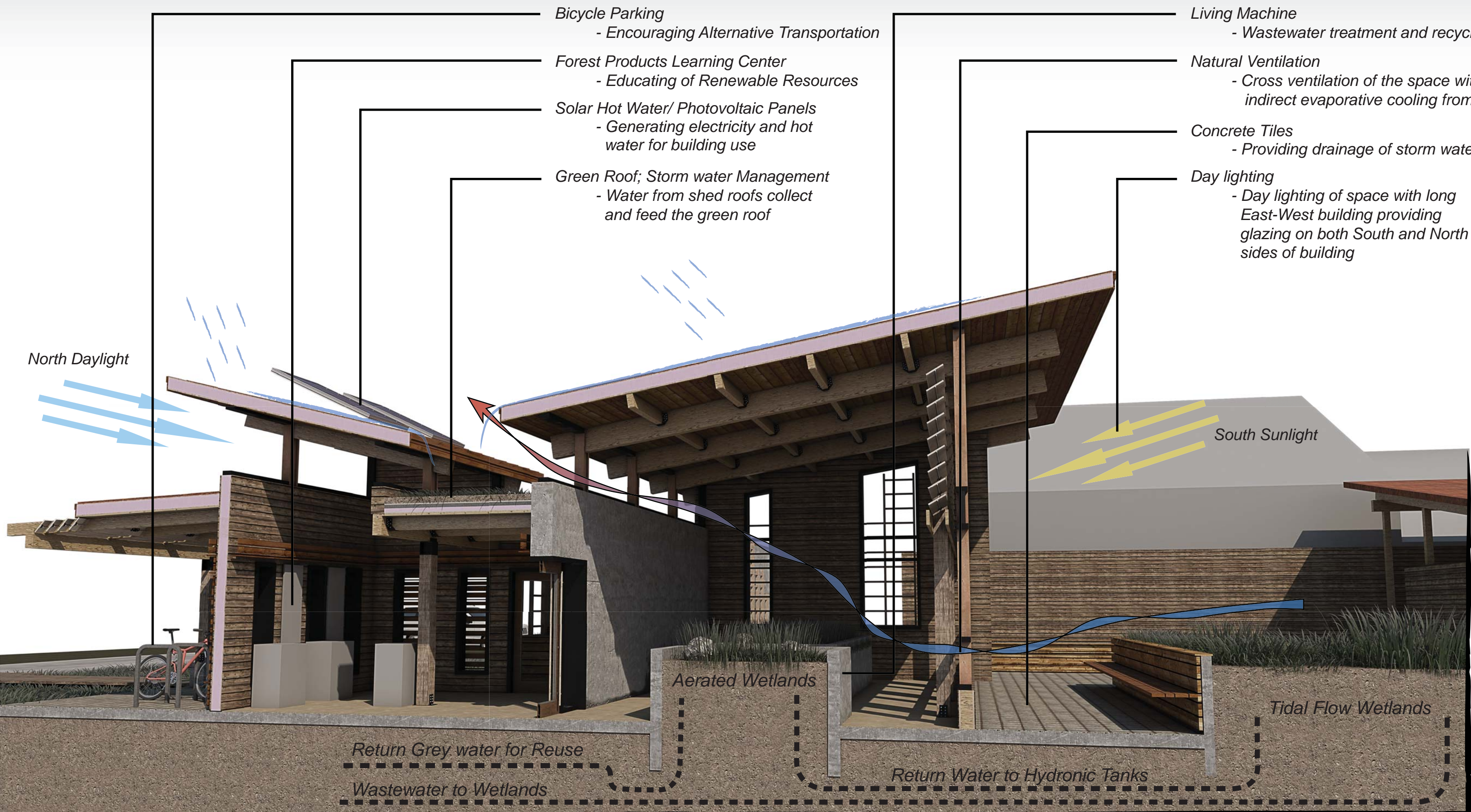


NORTH ELEVATION
SCALE: 1/8" = 1'-0"

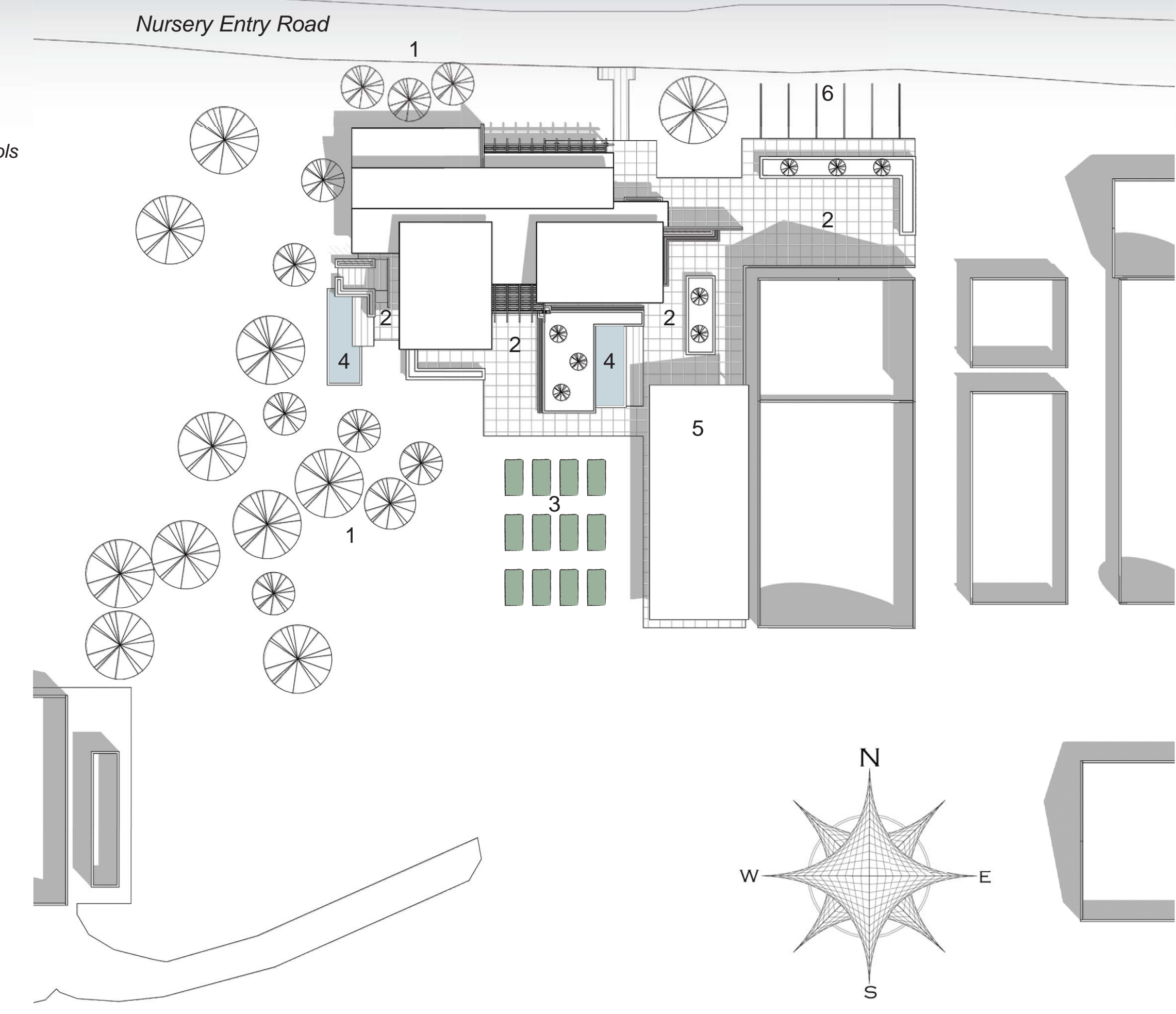


EAST ELEVATION
SCALE: 1/8" = 1'-0"

Sustainable Strategies



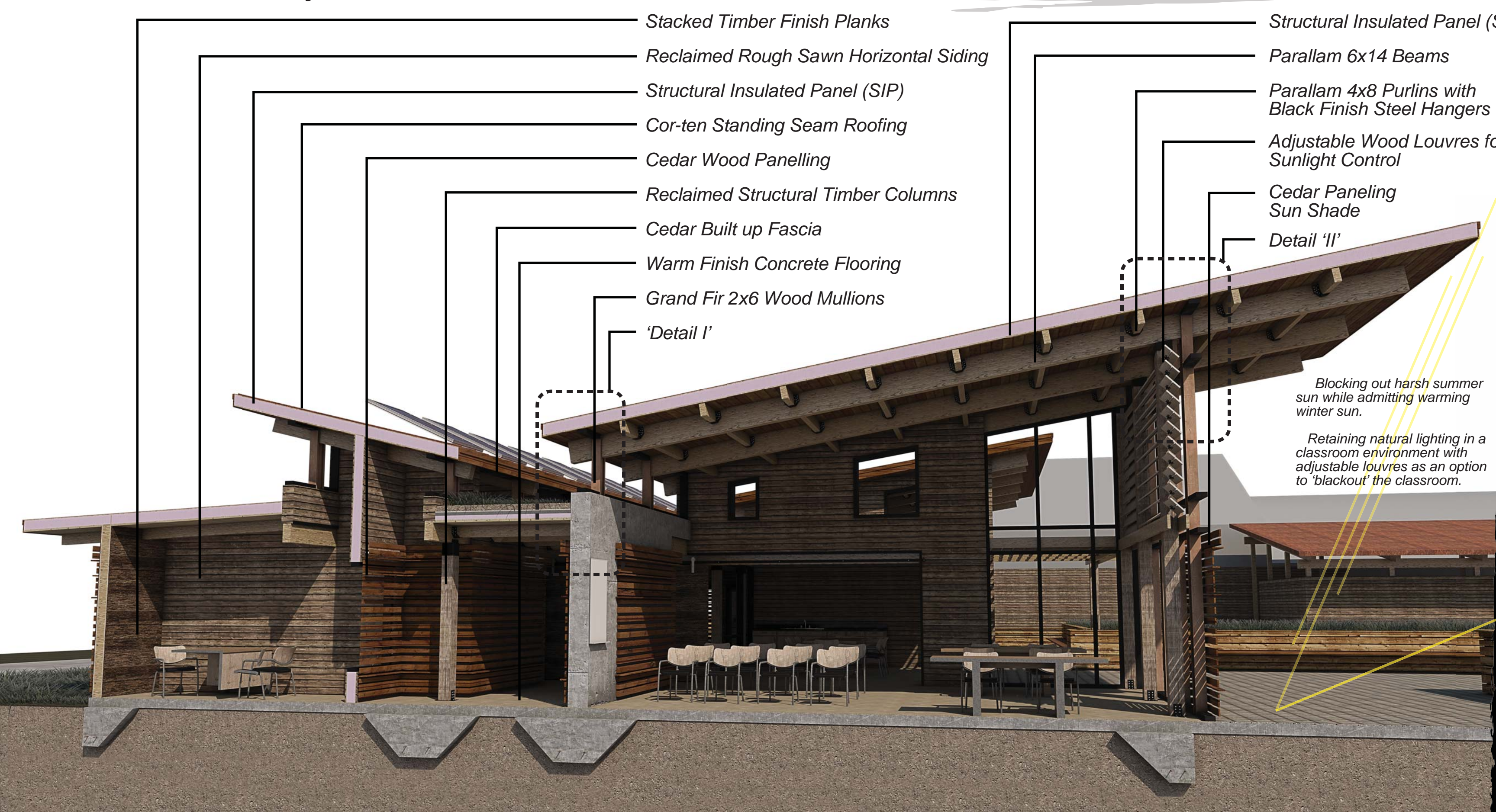
LIVING MACHINE BUILDING SECTION 'A'



SITE PLAN
SCALE: 1/32" = 1'-0"

- 1 Proposed Tree Planting**
 - North Cluster
 - Helping to wrap and enclose the building into the 'Forest'
 - Filtering dust from gravel road
 - Creating pleasing views for workspace
 - South Cluster
 - Shade and wind block for private courtyard
- 2 Layered Courtyard Spaces**
 - Entry Courtyard
 - Open to encourage outdoor sales events
 - Study Courtyard
 - Quiet courtyard cooled by trees, building, and ponds
 - Public Courtyard
 - Open courtyard connected to flex space and classroom
 - Private Courtyard
 - Small scale courtyard connected to workspace and lounge
- 3 Community Gardens**
 - Small plots left exposed to the sun to provide solar efficiency for small gardens
- 4 Proposed Water Pools**
 - Taking advantage of prevailing Southwest winds, two water ponds are positioned to help provide the building and outdoor space with indirect evaporative cooling.
- 5 Proposed Covered Storage**
 - New 1,500 S.F. covered storage shed for seasonal storage of pallets and seedling containers
- 6 Additional Parking**
 - Five new parking spaces added to current four visitor parking spaces

Materiality - Idaho Forest Products

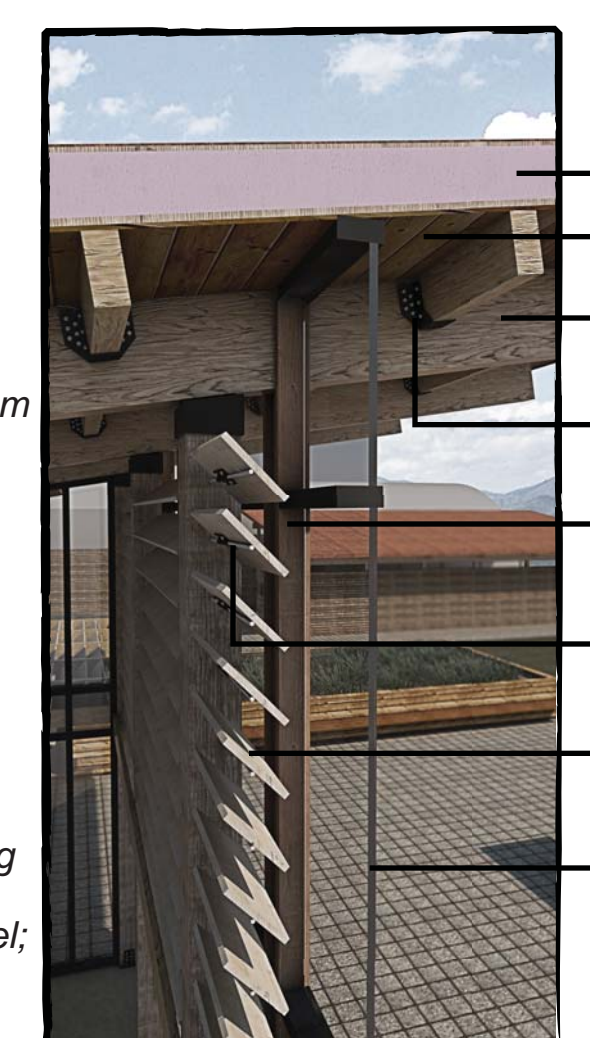


NORTH-SOUTH BUILDING SECTION 'B'

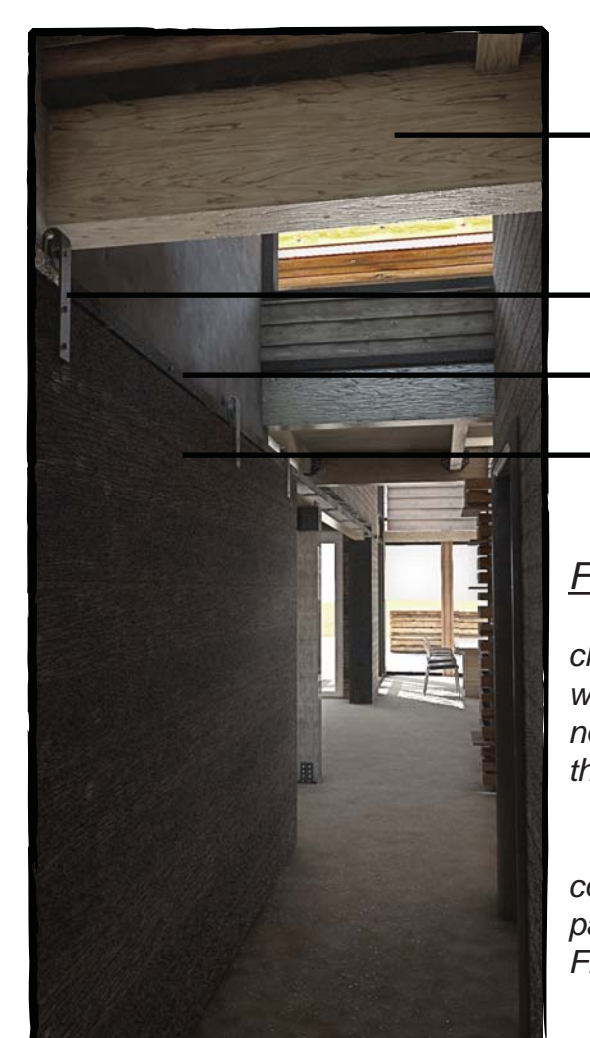
- Western Larch:** - Ceiling Finish
- Trus Joist Parallam:** - Structural Beams & Joists
- Grand Fir:** - Mullions
- Reclaimed Siding:** - Horizontal Siding
- Warm Finish Concrete:** - Interior Floors
- Western Red Cedar:** - Ceiling Finish, Panelling, Fascia
- Reclaimed Timber:** - Structural Columns
- Concrete:** - Bearing Walls, Planters, Foundation
- Western Red Cedar (Rough Sawn):** - Planters, Exterior Decking
- Stacked Timber Panels:** - Horizontal Siding, Sliding Partition
- Concrete Tiles:** - Site Finish Floor



DETAIL 'I': GREEN ROOF WOOD PANEL CLERESTORY



DETAIL 'II': ROOF ASSEMBLY LOUVRE SYSTEM GLAZING SYSTEM



DETAIL 'III': SLIDING PARTITION NORTH CLERESTORY NORTH-SOUTH MASS